



Mt. Diablo Resource Recovery

Trusted+Proven+Essential

2025 Sustainability Report

Contents

WHO WE ARE	1
A Message from Our CEO	2
About Us	3
Our Guiding Principles	4
About This Report	7
TRUSTED	8
Goals & Sustainability Survey	9
Sustainable Development Goals & Sustainability Survey	10
Employee Engagement	13
Employee Well-Being	14
Community Impact	15
PROVEN	16
Regional Climate Action Plan	17
Emissions Reductions	19
100% Renewable Energy	22
Supporting Biodiversity and Encouraging Carbon Offsets	26
Commitment to Community	27
Good Neighbor Policies	28
ESSENTIAL	29
Our 2030 Facility Upgrades	31
Transportation	33
Anaerobic Digestion - Waste to Fuel Investments	38
Hydrogen - Waste to Fuel Investments	39
Biomass Gasification - Biomass to Energy Investments	40
Our 2030 Organics Facility Upgrades	41
Conventional Recyclables	43
Extended Producer Responsibility	44
Construction & Demolition Environmental Policy	49
Investment in Carbon Farming	51
Appendix A	54



WHO WE ARE

Mt. Diablo Resource Recovery (MDRR) is a family-owned resource recovery company that serves over 250,000 residents and thousands of businesses throughout Contra Costa, Napa, and Solano Counties. Our facility in Pittsburg, California, is the area's largest state-of-the-art recycling processing center that works to keep recyclable items and organic materials out of the landfill.

MDRR's history is firmly rooted in the local community, beginning as a one-horse and buggy collection service in the 1930s, to the operations we have today. The Garaventa family developed the enterprise alongside our local jurisdictions with a focus on service, respect for our employees and their safety and a commitment to the environment.

MDRR combines excellence in customer service with competitive rates, operating recycling and recovery programs designed to increase sustainability and reduce greenhouse gas (GHG) emissions. We recognize the hard work of our employees and know that our success is the result of their dedication. Our roots run deep in local community traditions and we have a clear vision contributions that will benefit our community's future.

MDRR is proud to share this report on our vision and expectations concerning the company's sustainability goals, commitments, and actions taken to meet both. This report is organized in the same way we guide our company;

Trusted + Proven + Essential.





A Message from Our CEO

On behalf of Mt. Diablo Resource Recovery (MDRR), I am pleased to present this 2025 Sustainability Report. For nearly a century, sustainability has been at the core of MDRR's mission, vision, philosophy, and commitment. Over the years, our commitment to sustainability has extended to incorporate the responsible management of not just solid waste but has expanded into integrating sustainability into how we are managing our fleet, facilities, and partnerships. We recognize the importance of providing our customers with reliable, essential and sustainable services, recognizing the significance for ourselves, our customers, and the broader community. Our services are a testament to decades of diligent effort, planning, and foresight, establishing us as the premier solid waste service provider in our region.

As you review this report, you will note our high standards and ambitious goals, especially regarding worker safety, reuse programs, and future facility enhancements. Our essential workers and managers play a pivotal role in advancing our sustainability initiatives, constantly motivating us to maximize our impact. Their invaluable contributions are the foundation of our success, and I extend my heartfelt appreciation for their hard work and daily commitment to our services. Our daily operations reinforce our values to remain **Trusted + Proven + Essential**. We continually look for and implement improvements in how we can divert greater amounts of materials from landfills. We look forward to a long-term, collaborative relationship with all of our communities that prioritize responsible operations, customer service and diversion of materials.

Sincerely yours,
Kish Rajan, CEO





About Us



15+ Communities Served



200+ Collection Vehicles



250,000+ Residents Served



Four Offices
Three Facilities & Reuse Center



125,000+ Tons Per Year
Spared from Landfills



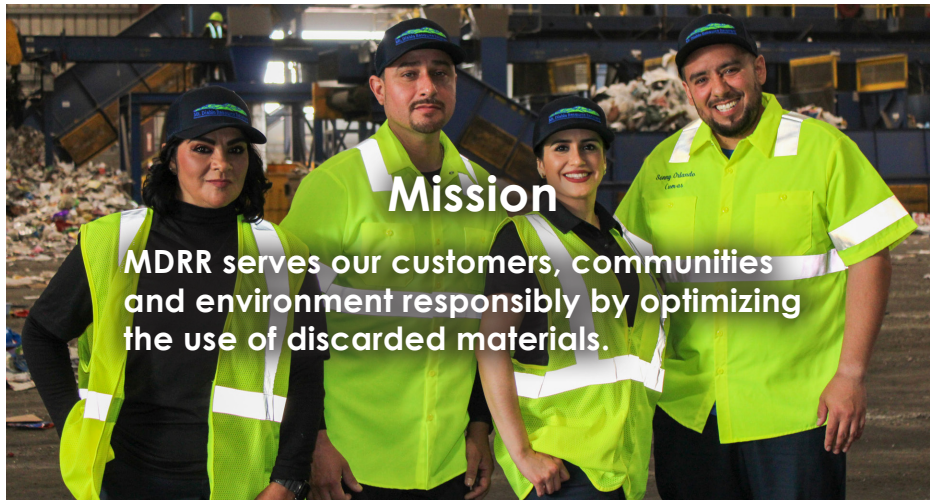
90+ Years of Experience





Our Guiding Principles

Our team of employees are guided everyday by our corporate mission, vision and philosophy. We are uncompromising in our commitment to our employees' safety and wellbeing. MDRR has been visionary in our goals, focusing on the long-term investment of resources to ensure our operations are prepared to exceed all future regulatory and recycling expectations.





Commitment to United Nations

Sustainable Development Goals (SDGs) Environmental Social Governance (ESG) at MDRR

MDRR is fully supportive of and committed to the [United Nations SDGs](#) as a crucial means to achieving sustainable development and addressing the interconnected global environmental challenges we face. By actively working to improve our company's environmental impact, enhance the sustainability of our supply chain, fostering safe and equitable work environments, and advocating for a more circular economy, we are actively aligning ourselves with multiple SDGs.

Our dedicated efforts in these important areas lead to a reduced ecological and societal footprint within our own organization and supply chain, and contribute to the broader industry by offering effective solutions and inspiring positive change throughout the supply chain.

7 AFFORDABLE AND CLEAN ENERGY



SDG 7

MDRR is committed to transitioning our collection fleets to more sustainable fuel options as well as utilizing Energy Star and Green-e energy uses in our infrastructure.

3 GOOD HEALTH AND WELL-BEING



SDG 3

MDRR is dedicated to creating a work environment that prioritizes fairness and safety. This dedication is evident within our workplaces, the programs offered to our employees, and the requirements of our suppliers.

11 SUSTAINABLE CITIES AND COMMUNITIES



SDG 11

MDRR actively works with community-based organizations to foster collaboration with our community outreach programs and our Reuse and Rescue Programs.

9 INDUSTRY, INNOVATION AND INFRASTRUCTURE



SDG 9

MDRR plays a crucial role in helping Contra Costa County reach its objectives in recovering and recycling organic waste and edible food as outlined in SB 1383.

12 RESPONSIBLE CONSUMPTION AND PRODUCTION



SDG 12

MDRR's Environmentally Preferred Purchasing Plan (EPPP) is comprehensive and covers areas such as requirements for office equipment and electronics, kitchen supplies, building maintenance and remodeling, food service, pest management, and landscaping.

13 CLIMATE ACTION



SDG 13

MDRR is actively working to reduce our greenhouse gas emissions and has established ambitious goals to use 100% renewable diesel for our fleet by 2025 and decrease GHG emissions by 14% by 2030.



Community Commitment

Running with Our Successes

OUR RECOGNITIONS



MDRR has been re-certified as a Green Business by Contra Costa County Green Business Program on June 24th 2024.



MDRR is the first Solid Waste enterprise to obtain a SWEET certification. We obtained Gold status in 2024.



MDRR achieved the MCE Deep electric status at a 60% renewable rating. Over 60%+ of our electricity is from renewable sources.



Our construction and demolition (C&D) recovery facility has been certified by RCI as achieving a 91% diversion rate.



MDRR will continue to meet 61 different criteria in this program to re-certify in this program in perpetuity.



We strive to shorten the supply chain, benchmark emissions, improve biodiversity, and reduce GHG emissions to bring us to SWEET Platinum in 2025.



MDRR has already laid the groundwork for ensuring that 100% of our electricity that we purchase is from renewable sources.



Our C&D line is going to benefit from the addition of new equipment, as we aim to reach 95% diversion.



MDRR is obtaining Leadership in Energy and Environmental Design (LEED) certification for its building. Our organics building will achieve LEED Certification, and all future buildings will also be certified in alignment with the updated qualifications and standards. MDRR is pursuing a LEED Campus Certification of green building for the MDRR Park in Pittsburg.



About This Report

In order to update the community and stakeholders of our progress towards our sustainability vision, MDRR will publish a sustainability report every five years. This report is prepared in alignment with the governance, social, and environmental reporting guidelines set forth by the United Nations' Sustainable Development Goals (SDG) and their guidance of Environmental, Social, Governance principles (ESG). ESG is shorthand for an investing principle that prioritizes environmental issues, social issues, and corporate governance. These goals align well with our existing commitments to be Trusted + Proven + Essential.

Trusted to provide
transparent **Governance**



Proven to support
Social wellbeing



Essential to a healthy
Environment

We've built a relationship with our community for most of a century, and that tradition of trust is of great value to us. Our customers, partners and employees, and jurisdictions are first and foremost in our decision making. This relationship extends to our cherished employees, who are respected and empowered to ensure the sustainability of our company for generations to come. Communities serviced include Bay Point, Bethel Island, Brentwood, Knightsten, Concord, Discovery Bay, Marsh Creek, Oakley, Pittsburg, Rio Vista, Solano County, and RecycleSmart.

Our statements and goals are supported with rigor and veracity. Our progress towards the vision is both measurable and confirmed by third parties. Toward that effort, we have adhered to and obtained multiple environmental standards including SWEEP (Solid Waste Environmental Excellence Performance), Contra Costa County's Certified Green Business Program, and calculate and monitor greenhouse gas emissions for our current and future operations. We are dedicated to upholding ESG principles and promoting the well-being of our employees and the communities in which we operate.

Our role in the community extends to the natural spaces of Contra Costa and Solano Counties, and as such, it is our duty to perform the essential work to promote a sustainable future. We take this opportunity to highlight the improvements to our company and facilities, following the City and County Climate Action Plans, to lead the way to a greener future.

Key Policy Drivers:

- SB 1383 - 75% organics diversion
- SB 54 - phase out single use plastic
- SB 32 - reduce GHG emissions by 40% by 2030



TRUSTED + PROVEN + ESSENTIAL to provide transparent **GOVERNANCE**

Our commitment to transparent governance includes establishing measurable safety goals, prioritizing employee well-being, and promoting environmentally preferable purchasing practices. This ensures that our essential workers can return home safely to their families each night.



Trusted

Defining Our Sustainable Development Goals & Sustainability Survey

MDRR conducted a survey among our stakeholders to gather their input on the current and future priorities for our operations and the desired direction for MDRR in advancing of our ESG (Environmental, Social, and Governance) efforts. The report primarily highlights sustainable cities and communities, climate action, and the well-being of our employees and community. The graph to the right includes weighted averages from the responses.

MDRR's workforce is the foundation of our organization and, as such, developing objectives that respond to these ESG priorities will drive long-term success. In order to address the concerns of our employees, our future objectives encompass ESG goals, including the promotion of sustainable cities and communities, climate action, the mitigation of inequalities, and the advancement of good health and well-being.

Some objectives that align well with these ESG priorities and fostering sustainable communities, promoting unity, peace, and justice. In addition, strengthening educational and civic institutions, investing in industry, innovation, and infrastructure are essential. Advancing affordable, cleaner energy solutions will help continue driving the fight against climate change. A company commitment to promote good, equitable employment opportunities for all is necessary.





Trusted

Defining Our Sustainable Development Goals & Sustainability Survey

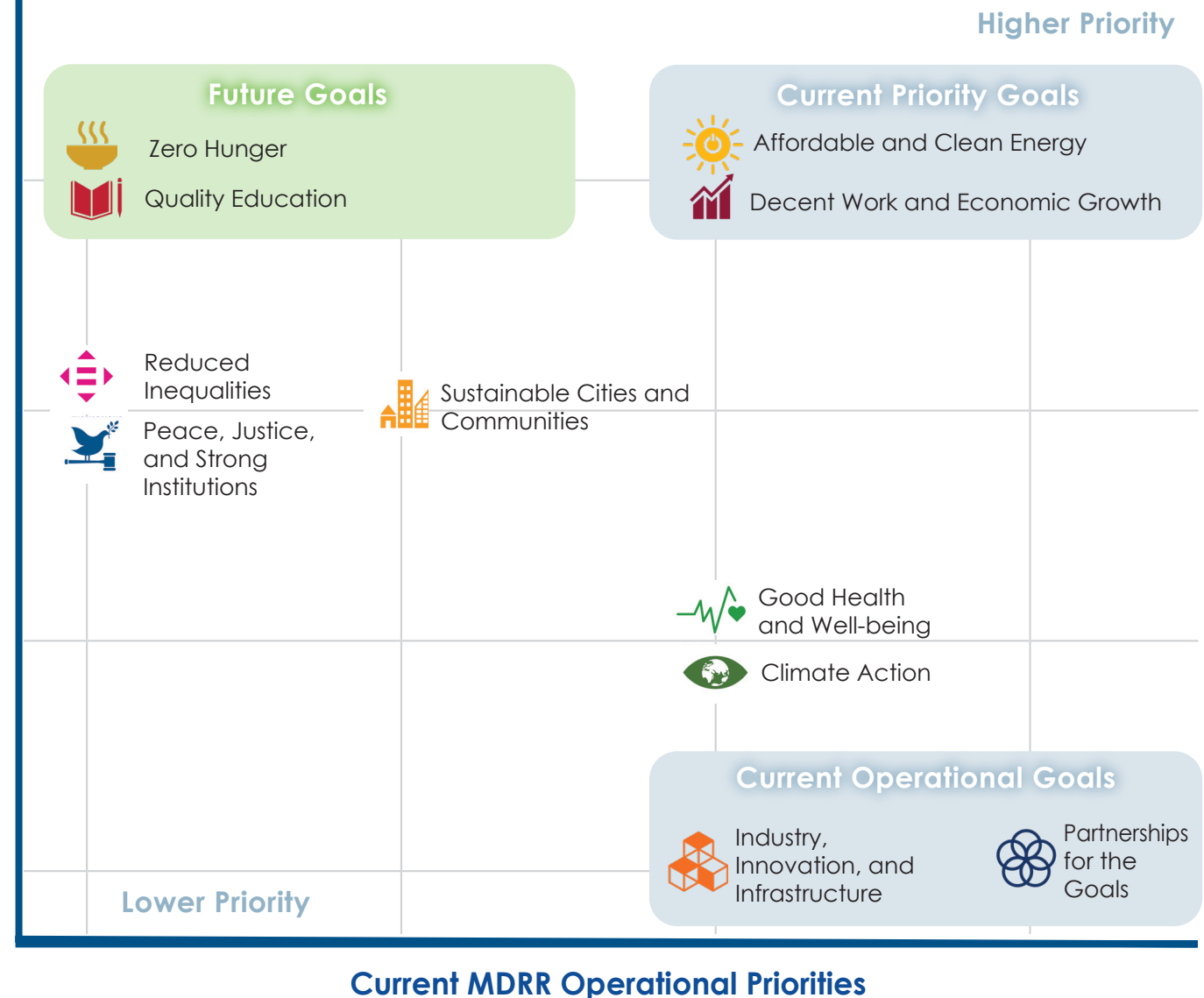
MDRR Top Sustainability Priorities

The MDRR management team was asked to rank their top three priorities out of the 17 United Nations Sustainable Development Goals. They were asked to consider their top three priorities for the operations of the company and their top three priorities that are of immediate importance to themselves as employees and their families.

From these two survey questions, we determined the top goals in which they are currently working on for the company overall and for the operations. We also prioritized future goals to focus on, as they are important for employee engagement and support. Current priority goals include affordable and clean energy, and decent work and economic growth. Current operational goals include industry, innovation, and infrastructure, and partnerships for these goals. Future goals include zero hunger and quality education.

Current MDRR Employee Priorities

Sustainable Development Goals - Top Priorities





Trusted

ESG and Our Sustainability Survey Assessment

We requested our management team to consider the communities and stakeholders that could potentially be influenced by MDRR operations through a materiality assessment. We also asked them to formulate a vision for MDRR's future direction that would enhance the company's ESG efforts. They were tasked with examining significant concerns related to their operations, supply chain, market competitiveness, as well as future risks and opportunities. The following list presents key MDRR ESG opportunities and risks that have been and will remain in focus. This ESG report will summarize actions to date and efforts going forward.

How is MDRR Meeting our Sustainability Goals?



Waste Reduction



Green Building



Comply with Increasing Regulations



Health and Safety



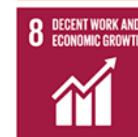
Supporting Environmental Businesses



Domestic Recycling Markets



Labor Management



Compensation



Business Ethics

Environmental

- Waste Reduction
- Green Building
- Increasing Recycling
- Financing Environmental Impacts
- Raw Material Sourcing
- Carbon Emissions
- Biodiversity and Land Use
- Climate Change Vulnerabilities

Social

- Health and Safety
- Supporting Environmental Businesses
- Domestic Recycling Markets
- Labor Management
- Supply Chain Standards
- Affordable Service
- Supporting Non-Profits
- Balancing Regulations

Governance

- Partnerships
- Ownership & Control
- Compensation
- Business Ethics
- Accounting
- Tax Transparency
- Board of Directors



Trusted

Notable Training Programs

MDRR Safety Plan

Monthly safety trainings are held with a rotating agenda of topics. These safety training topics include Cal OSHA-required content such as Injury Illness and Prevention Plan (IIPP), Hazard Communication, Personal Protective Equipment (PPE), Industrial Truck Operator and Pedestrian, Hearing Conservation, Respiratory Protection, Emergency Response and Workplace Violence, Heat Illness, and blood-borne pathogens and COVID-19 prevention. In addition, a large population of company DOT professional drivers are also trained in defensive driving and distracted driving techniques.

All MDRR employees in every line of company business are required to participate and complete safety trainings applicable to their workplace risks, as documented on an annual training calendar. Being a Cal-OSHA designated high-hazard industry, we firmly believe that employees who are directly exposed to workplace hazards are properly trained to control the risks and employees who may not be exposed to those hazards also participate in these trainings to better understand the work environment of their peers whom they interact with every day.

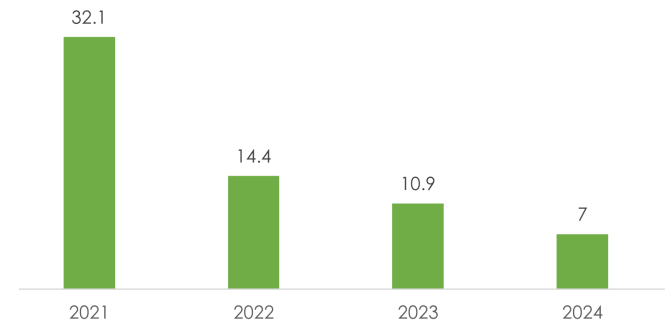
24/7 Safety

By ensuring that all employees complete these safety trainings, MDRR is fostering a mutual understanding amongst all employees on the company's workplace hazards and equipping them with the knowledge and preparedness to face a potential hazard or support a team member also facing a potential hazard.

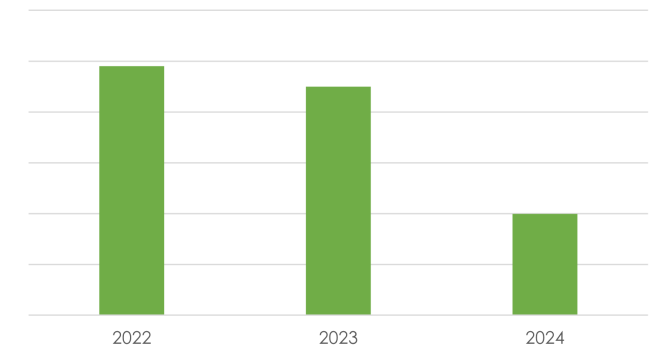
Please refer to the current [MDRR Safety Program Plan Review Calendar](#) for more.

All employees participate in a comprehensive "new employee safety" orientation program that includes a strong emphasis on the company's Safety, Environmental, and Sustainability Plans. MDRR ensures that all employees receive proper safety training for their respective roles. Upon completion of the training, the employee will sign a document acknowledging their understanding of safety protocols. Additionally, employees will receive a personalized contact card from the **Director of Environmental Health and Safety, Bart Miller**, emphasizing the importance of safe decisions both at work and at home. Employees are encouraged to call if they encounter a hazardous situation outside of work and seek an opinion or support.

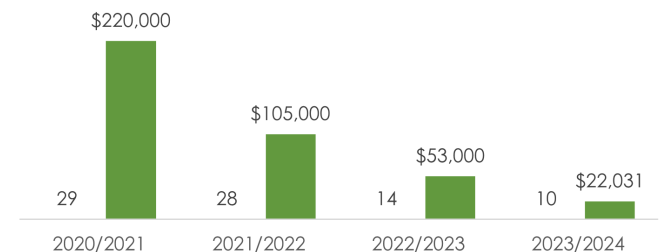
Preventable Crash Rate



Number of Lost Days Each Year



Number of Auto Crashes and Money Spent





Trusted

Employee Engagement



Employee Recognition Program - Driving Safety Excellence

Throughout the calendar year, employees in all lines of company business who exhibit a commitment to safety excellence are identified by their Supervisors to receive a "Perfect Safety Moment" recognition. The Director of Environmental Health and Safety and the employee's supervisor meet with the employee in the field to commend the observed action with a certificate, gift card, and a unique MDRR challenge coin. In most cases, an image of the award presentation is posted on all electronic bulletin boards throughout the company."

Development of 2025 Leading Safety Metrics

Establish a safety metric for professional drivers that helps recognize and promote safe driving behaviors and ensures 100% coaching follow-up on unsafe driving behaviors using in-cab camera technology.

Establish a safety metric for regular, required supervisor-employee one-on-one interactions to promote employees feeling valued, identify hazards, review safe practices, and touch on other important topics such as wellness and workplace security.



Employee Well-Being

COVID-19 and Pandemic Prevention

MDRR's commitment to employee safety extends beyond the workplace to ensure the well-being of all employees and their family in any setting.

Collective Bargaining Agreement

MDRR respects and supports RecycleSmart's stated emphasis on the importance of labor peace during the term of the Agreement. We note here that MDRR's entire relevant workforce is already represented by Teamsters Local 315. In the event of questions regarding employee representation during the term of the agreement, MDRR agrees to remain entirely neutral. MDRR has never had a work stoppage and looks forward to continuing our positive relationship through the term of the Agreement with RecycleSmart.

“

Every day at Mt. Diablo Resource Recovery, we commit our people & our systems to elevating the environmental, economic, & community value of every material stream we collect & process. We call our philosophy Community Resource Optimization.

”

- Sal Evola, Executive Director,
External Affairs





Social

Community Impact



Our safety goals remain to have zero accidents and zero lost days.

Safety
Goal

Environmentally Preferable Purchasing and Practices Policy

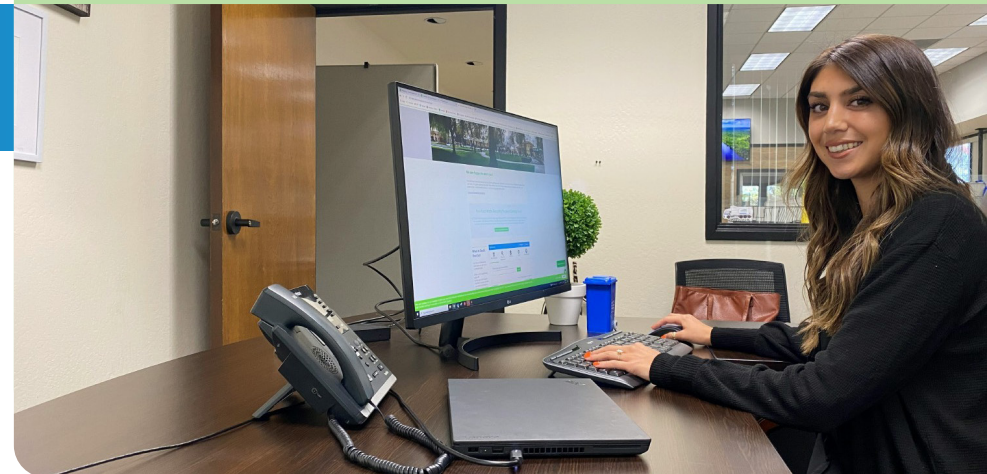
MDRR has spearheaded initiatives, including setting ambitious waste reduction targets, stringent guidelines for company-wide Environmentally Preferable Purchases (EPPPs), waste prevention initiatives, upcycling programs, and made significant achievements in source reduction, reuse, and rescue efforts.

Please see the [2024 EPPP document](#) for more information.

Giving Back and Making an Impact

MDRR plays a vital role in protecting our parks, streets, and waterways. We help to create cleaner and healthier spaces for our communities.

We offer our employees opportunities to engage with their communities and view it as a privilege for MDRR to contribute through charitable donations and sponsorship of community events.





Pictured: Class learning about the journey of recycling at MDRR.

TRUSTED + **PROVEN** + ESSENTIAL

to support **SOCIAL** wellbeing

Our dedication to social objectives extends throughout Contra Costa County. We align our initiatives with the regional Climate Action Plan and have a goal to increase access to divert materials to the community. By expanding our Reuse Warehouse and promoting paperless billing, MDRR demonstrates its significant role in supporting our community.



Proven

Regional Climate Action Plan Analysis and Community Goals



Jurisdictional Climate Action Plans (CAPs)

The Contra Costa County 'Interim Climate Action Work Plan 2023-2024' involves policy goals to increase electrical grid resiliency, recover organic waste and edible food with SB 1383, update the County's existing Environmentally Preferable Purchasing Policy (EPPP), and to plan for a transition to a local economy that is less reliant on fossil fuels. The city of Concord's 'Sustainable Concord and Climate Action and Resilience Plan' incorporates policies such as redesigning electricity rates to support energy conservation, peak load management, electrification, and renewable energy generation as well as increasing the use of public transportation and other low-carbon and no-carbon transportation options.



UN's Sustainable Development Goals

The 17 United Nation's Sustainable Development Goals (SDGs) cover a wide range of sustainable and ethically-sound principles and objectives globally. Key objectives of the 17 ESG goals include affordable and clean energy, sustainable cities and communities, responsible consumption and production, good health and well-being, industry, innovation and infrastructure, and climate action.



MDRR's Sustainable Community Goals

Based on the Contra Costa County CAP and the UN SDGs, MDRR's initiatives play an integral role in bolstering the execution of the plan through various sections, including sectors: energy resiliency and renewable energy, carbon farming plans, SB 1383 organics goals, sustainable purchasing and more. Our Sustainability Report highlights our commitment to ESG and regional CAPs to operating in an ethical and sustainable manner that benefits all stakeholders – employees, customers, shareholders, and the environment. Our journey to more sustainable business practices is ongoing, guided by a purpose-driven culture and an emphasis on transparency.





Proven

Emissions Disclosure

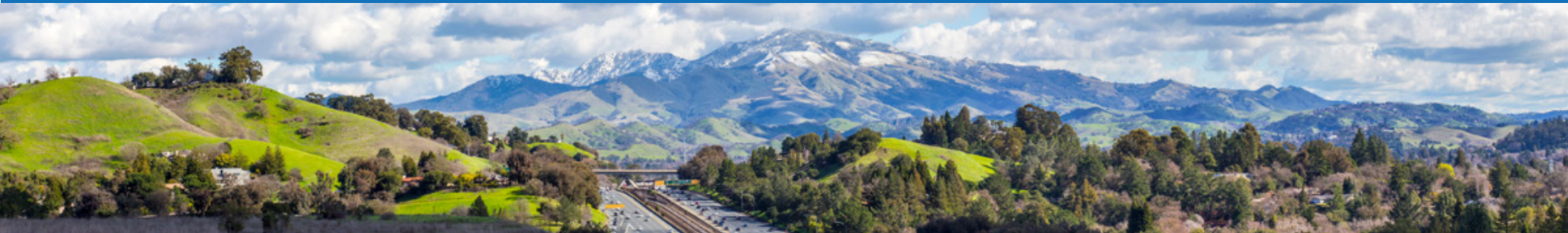
Contra Costa County Climate Action Plan Analysis - To address the Contra Costa Climate Interim Climate Action Work Plan 2023-2024:

Policy Goal	Goals for the Community	How MDRR is Addressing these Goals
1.1 Increase the number of carbon- neutral buildings in Contra Costa County	All electric buildings; Energy efficiency and weatherization programs.	Working on becoming LEED-Certified with new buildings.
1.3 Increase electrical grid resiliency	Energy storage; Energy use reduction in County facilities.	Energy Efficient, Renewable Power, Carbon-balanced, Energy Star, Green-e energy alternatives. Office equipment and electronics requirements are Energy Star Approved. Energy-efficient light fixtures and appliances to use less electricity.
1.4 Low-carbon building materials and strategies	Continue use of zero-waste construction practices in County construction projects; Develop tool to track embodied carbon in material choice for new construction and major renovations.	Under Future Considerations for EPPP: Use renewable energy sources such as photo-voltaic solar panels to produce electricity. Working on becoming LEED-Certified with new buildings.
2.1 Sequester carbon in natural lands in Contra Costa County	Carbon sequestration on public and private lands; Explore opportunities to incorporate previous paving in County projects.	Future plans include sequestering carbon through carbon farming plans.
6.2 Plan for transition to a local economy that is less reliant on fossil fuels	Implement Community Funding Project grant from U.S. Dept. of Housing and Urban Development to support development of the Just Transition Economic Revitalization Plan Roadmap.	Currently, MDRR uses both renewable diesel and diesel for the fleets. MDRR is also in the process of receiving permits to build a biomass gasification facility as well as looking into hydrogen technology. Future plans are to generate energy on-site.
7.3 Build Community and County Employee Support for Climate Action Plan	Newsletters, meetings, and collaboration with cities and community-based organizations.	Community outreach programs, including the distribution of monthly newsletters for residential and commercial purposes, are part of our engagement strategy. Additionally, MDRR actively works with community-based organizations to foster collaboration.



Proven

Emissions Reductions



MDRR mitigates greenhouse gas emissions reductions holistically using every tool available. MDRR transitions its vehicles into lower-emitting energy sources such as renewable diesel and compressed natural gas in lieu of fossil fuels. Furthermore, MDRR maximizes the amount of material it recovers for recycling and repurpose. These recycled and recovered materials substitute for carbon-intensive virgin resources and keep usable materials out of landfills. The data was prepared in a manner consistent with The Climate Registry (TCR) General Reporting Protocol (GRP) Version 3.0 dated May 2019 and its associated updates and clarifications.

Fuels

MDRR is transitioning its fleet to renewable diesel, with 64% of its diesel usage from this source in 2022, aiming for 100% by early 2025. This is part of a broader shift away from fossil diesel fuel.

Recycling and Avoided Emissions

In terms of recycling, MDRR calculates avoided emissions based on the EPA's WARM model. In 2021, recycling efforts avoided an estimated 149,710 MTCO₂e, with a similar figure of 149,702 MTCO₂e in 2022.

Carbon Accounting

MDRR is actively measuring its GHG emissions to improve management. In 2022, its operations generated approximately 14,222 MTCO₂e, primarily from transportation emissions related to its diesel-fueled collection and transfer vehicle

Targets and Performance



Reduce greenhouse gas emissions in Contra Costa County through fuel usage and carbon accounting management.



As a route-based organization, a portion of our carbon footprint is linked to our fleet. Therefore, we are committed to strategically integrating alternative fuel vehicles into our initiatives to reduce fleet emissions.

MDRR's emissions assessment was developed consistent with The Climate Registry's (TCR) General Reporting Protocol (GRP) Version 3.0 for our fleet and facility emissions. Please see [Appendix A](#) for MDRR's Emissions Assessment.



Proven

Green Team Gardens - School Education Event

In addition to our work with the local communities, we are also participating in programs to help underserved communities in other nations with reuse.

THANK YOU!

We're so excited to share this heartwarming photo from a rural mountain community in **Jamaica**, where our Reuse Program is making a lasting impact!

As International Missions Director, Julie Harrington shared: "Most if not all the children have never owned a book of their own, and when I spoke with the teachers asking if we could send some home with them, they were so excited! We could not have done any of this without the support and donations from Mt. Diablo Resource Recovery. Thank you for investing in others!"





Proven

Beyond Net-Zero

Beyond Net-Zero: Our offsets from operations exceed our emissions

GHG emissions from the Waste Sector has already achieved a Net-Zero GHG emissions goal. To achieve further GHG reductions, even greater diversion of organics and other recyclable commodities from landfills may be realized and further expansion and enhancement of the alternative non-disposal pathways are being developed. In addition, greater emphasis will need to be placed on reducing the volume of waste generated, recycling/reusing products at the end-of-life and remanufacturing these materials into beneficial products. To achieve Net-Zero, the direct GHG emissions from the Waste Sector would have to be fully offset by avoided GHG emissions. Avoided GHG emissions are reductions in life cycle GHG emissions that would occur because waste is shifted from landfilling to alternative non-disposal pathways, as defined by the California Air Resources Control Board.

Net-Zero
Emissions

**MDRR avoids 10.4 times the operational emissions
we emit through our recycling programs!**



**Direct
Operational Emissions**

—



**Emissions Removed/
Avoided Through Recycling
and Composting Programs**

=

CO₂

We avoid over 10 times
our operational emissions!

Net Emissions



Proven

100% Renewable Energy

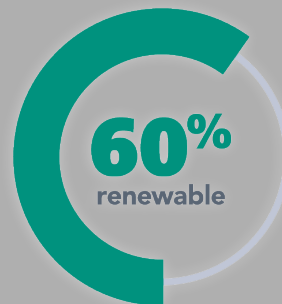


Transitioning to DEEP ELECTRIC

[Marin Clean Energy \(MCE\)](#) is a locally controlled, not-for-profit public agency who exists to serve residents and businesses by providing electricity at competitive, stable rates. MCE provides electricity service and cutting-edge energy programs to more than 1.5 million people in 38 member communities in Contra Costa, Marin, Napa, and Solano Counties.

Committed To:

- Reducing emissions
- Energy equity and affordability
- Energy resiliency and reliability
- A sustainable workforce
- Clean transportation



To date, MDRR has been utilizing MCE's "Light Green" electrical service through PG&E, which allows us to procure 50% of our electricity from sustainable energy sources such as solar, wind, and hydropower. MCE has presented a cost proposal in 2024 for MDRR's rating to attain "Deep Green" status, which signifies that 100% of our electricity consumption will be derived from sustainable energy sources.



By embracing the power of 100% electric energy, we will not only elevate our Contra Costa County Green Business Certification to new heights but also carve a path towards earning an additional SWEEP credit. This commitment is not just a step forward; it's a heartfelt pledge to nurture our direct community and inspire others to join us in this vital journey toward sustainability.

Key Actions to Drive Performance:

- Development on-site renewable power with solar, anaerobic digestion, and biomass gasification.
- Actively tracking energy use throughout facilities.
- Developing and implementing ways to model, monitor, and measure the journey towards a verifiable net positive impact.
- Measuring performance: tracking electric bills and investing in Deep Green electricity for 100% electric energy in 2024.



Proven

Commitment to Community



At Mt. Diablo Resource Recovery, our success is in part due to the support we receive from the communities we serve, in which our employees reside and contribute. We offer our employees opportunities to engage in community service, and view it as an honor for MDRR to contribute to charitable causes or support local events. Below are some community events we hosted and supported.

Compost Day Camp

If your kids are aspiring eco-heroes, sign them up for our *free* Compost Day Camp! We invite children ages six and up to participate in games and activities, encouraging them to become composting champs. We welcome parents to stay and join the fun, too!



Free Holiday Decor Giveaway

Pick up gently used items for free! From spooky Halloween decorations to cozy Thanksgiving accents and festive Christmas ornaments. We have a variety of gently used décor to get your home in the holiday spirit. Everyone is welcome to join us for this community event.

Other outreach programs include the Byron Community Clean-up, Concord Residential Drop-off event, Book Bag + School Supply Giveaway, food recovery newsletters, fat/ oil/ grease outreach, HHW & sharps outreach, and litter prevention outreach.

MDRR's Collective Culture of Giving & Community Engagement

MDRR hosts annual events surrounding education with Earth Day, online composting classes, facility tours, and America Recycles Day where visitors are provided with free bags of compost!

Furthermore, in addition to our local initiatives, we take pride in the longstanding traditions upheld throughout our company. In 2023, our employees collectively gathered and donated in excess of 165,000 pounds of books, and rescued over 2 million pounds of viable items from being prematurely discarded in landfills.

165K Books donated

698K Lbs. of material were collected and handled safely through drop-off events.



Proven

Commitment to Community

In 2024, MDRR's Reuse Warehouse has successfully collected reusable items from over 30,000 households, re-homed over 190,000 pounds of books, and prevented almost 2 million pounds of donatable items from ending up in the landfill prematurely. Since 2015, MDRR has collaborated with RecycleSmart to donate over 24 million pounds of reusable items such as mattresses, to charitable organizations including East Bay Depot for Creative Reuse, St. Vincent DePaul, HOPE Solutions, Homeless Action Coalition, Uplift Family Services, and others. Additionally, MDRR has formed a partnership with 555 California Street in Pittsburg and is now expanding this collaboration opportunity to other jurisdictions.

MDRR also collaborates with the local St. Vincent DePaul in a reuse program. One of MDRR's team members closely monitors the evolving needs of the community. Throughout the year, these initiatives support various groups including homeless individuals, individuals with previous criminal convictions, and efforts to recover edible food. For instance, during the devastating Paradise Fire in California, many of our collected items suitable for donation were sent to assist the fire victims. These items were then directed to Contra Costa schools that were in need of sporting equipment. This particular program is affiliated with "Make it Home," a non-profit organization in Walnut Creek that Social Services utilizes to furnish apartments for previously unhoused individuals or those transitioning out of the foster care system.



**178.07 Tons of Batteries
Have Been Diverted Since 2015**

2024 Snapshot

Mt. Diablo Resource Recovery's Reuse Program





Proven

Commitment to Community - Expanding Reuse Warehouse

Together, We're Helping Our Earth and Neighbors!

Here are some of the local organizations your reusable donations are assisting:

- East Bay Depot for Creative Reuse
- St. Vincent DePaul
- HOPE Solutions
- TANF Scott's Valley Tribal
- Homeless Action Coalition
- CCC Health Services
- Uplift Family Services

MDRR is actively working towards expanding our partnerships with charity shops, second hand stores, community supportive services, and more in our surrounding communities.

To reach our goal of increasing access to diverted materials in the community, our plan is to extend the roll out of our Reuse Warehouse to additional franchise areas and to include multifamily developments.

Community Goal



Your reusable items help create jobs, aid those in need, and keep material out of the landfill.



Proven

Supporting Biodiversity and Encouraging Carbon Offsets

2025 Goal to Encourage Paperless Billing



In 2025, MDRR will implement a tree-planting initiative, planting one tree for each customer who opts for paperless billing during the **MDRR Go Paperless!** campaign.

Trees will be planted monthly via Tree-nation in California forests to support vital projects like Lost Forests Recovery in California and Wildfire Recovery in the Angeles National Forest. With a robust community of 250,000+ customers, we can have more of an impact as Contra Costa County grows. If just 50 percent of customers join us in this movement towards a greener tomorrow by choosing paperless billing, we could collectively offset a staggering **43,500 kg of MTCO₂e emissions**.



Angeles National Forest by USDA Forest Service

For one month of every year, MDRR promotes paperless billing sign ups. For every person that moves to paperless billing, MDRR donates 5 dollars to the Food Bank of Contra Costa and Solano. In 2024, the program encouraged 497 paperless billing sign ups, resulting in a \$2,485 donation.

Preserving forest habitats and watersheds is vital for maintaining Southern California's landscape. Managing land that supports endangered species ensures a balanced ecosystem. Since National Forests provide over half of California's water, the local water quality and supply depend on these watersheds. Efforts focus on treating pest infestations, planting native species, and promoting a healthy watershed. This initiative isn't just a campaign; it's a vital stride towards achieving our SWEEP Goal and propelling MDRR toward the esteemed Platinum Status. Together, we can nurture our earth and heal our forests—one tree at a time. Join us in this mission of love for our community and the planet.



WHO WE ARE

TRUSTED

PROVEN

ESSENTIAL

Proven

Commitment to Community

Supply Chain Management

MDRR is committed to supporting and contributing to events within our community. We proudly sponsored the annual Seafood Festival by providing compostable plates and cutlery.

For the annual Mayor's Conference, MDRR supplied cleaned, reusable water bottles and aluminum cups.

To promote sustainability at the Pittsburg Seafood & Music Festival, event planners implemented measures to minimize environmental impact. The use of single-use plastics was restricted, allowing only compostable flatware and serving materials. A dedicated trailer was provided for visitors to refill their reusable water bottles, and vendors were encouraged to utilize aluminum cans for beverages. Additionally, a bike valet station was established to promote cycling as an alternative to driving. Other initiatives included a 50% reduction in festival-related print advertising and the implementation of a triple-stream waste management system on-site.



Music Market



Shred-It Event



Seafood Festival



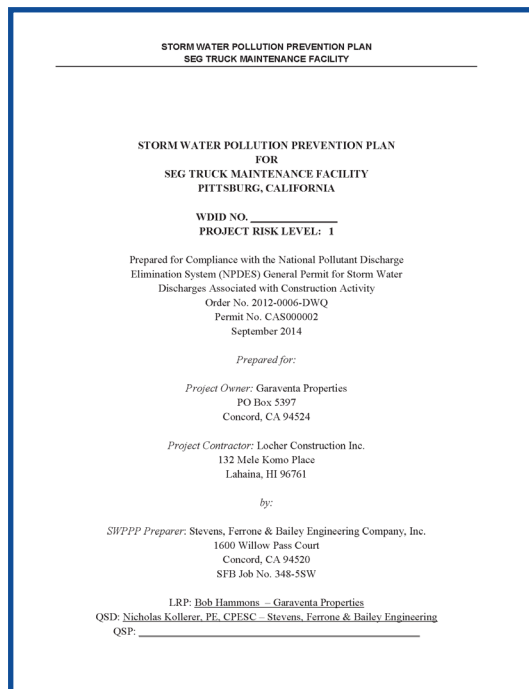


Proven

Good Neighbor Policies

Storm Water Pollution Prevention Program

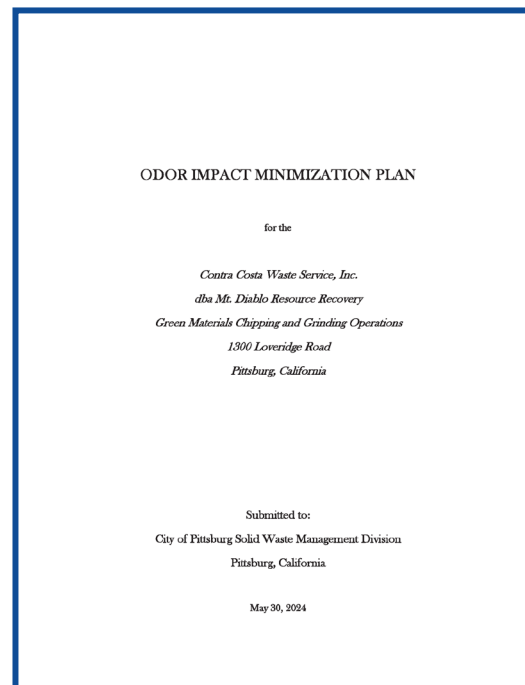
MDRR is compliant with all Stormwater Pollution Prevention Program (SWPPP) site plan requirements. The SWPPP is a comprehensive program document that documents how site construction activities and normal operational activities adhere to the regulations outlined in the Clean Water Act.



[Click Here for Full Document](#)

Odor Impact Minimization Plan

Mt. Diablo Resource Recovery Park is up to date on the OIMP. The OIMP responds to the requirements of California Code of Regulations, Title 14, Section 17863.4. The OIMP is part of the Transfer Processing Report for the MDRRP, which supports the issuance of a revised Solid Waste Facility Permit for the MDRR Park. Contra Costa Waste Service, Inc. (CCWS) owns and operates the MDRRP.



[Click Here for Full Document](#)

Litter Prevention & Abatement Plan

To maintain a tidy and environmentally-friendly workplace, MDRR has implemented a Litter Control Program that mandates all vehicles to securely cover their loads with tarps while commuting to and from the Facility. This measure aims to reduce the risk of litter accumulation on the premises and its surrounding areas.



[Click Here for Full Document](#)



TRUSTED + PROVEN + ESSENTIAL

to a healthy **ENVIRONMENT**

We aim to minimize our operational footprint by targeting waste reduction, energy efficiency, and greenhouse gas emissions reduction, and plan to expand infrastructure for alternative, renewable fuels in our facilities and fleet.



Commitments Towards a Sustainable Future in Contra Costa County

Our third commitment is continuing to excel at being an essential service and address the essential needs of Contra Costa County. Nothing can be more crucial to our survival as a species than to address the current and future consequences of climate change. For us as a waste management company, we must maintain our commitment to our customers to provide them with reliable essential services, especially in the face of ever-increasing challenges. At the same time, we must realize our potential to mitigate and adapt to the growing environmental challenges that face all of us. All sectors of society must fully engage and make positive, meaningful, and bold improvements to how we care for our planet. Our position as large fleet operator, community pillar, and materials management service means that we are well-positioned to make this essential change as we are.

Here we chart our course to our environmental and service goals. We set out to fulfill the Climate Action Plans of the counties and communities we serve. Further, we set forth to accomplish California's Advanced Clean Fleet rule to move away from greenhouse gas-intensive fuels.

Transportation

Our goal is to transition our fleets' fuels to reduce our fleet emissions from 14 kg CO₂e to less than 12 kg CO₂e per customer annually by 2030. This is a 14% reduction. This includes the use of bridge fuels, such as renewable diesel, to reap immediate reductions while our fleet is improved. Further on, our transition plan includes incorporating in zero emission vehicles, and innovating ways to charge them on our site with renewable energy.

Our transportation goals do not end at our service routes. We shall also reduce the transportation impacts of the materials we manage by preferring local suppliers for our equipment and domestic markets for our materials. Our twofold approach of improving fuels and reducing travel distances will result in substantial reductions in environmental impacts.

Facilities

Our facilities serve the essential purpose of giving discarded materials a responsible home. While these facilities do address this problem, we believe they can also provide other solutions. Our facilities can be utilized to provide assistance, education, inspiration, goods, and even power to our communities. We will simultaneously reduce the emissions associated with these buildings while expanding their purpose.

Partnerships

Our partnerships afford us opportunities to extend the reach of our essential environmental work. These partnerships include public agency partnerships such as RecycleSmart and private business partnerships such as Agromin. The common thread these partnerships have is their end goal of creating a more healthy and habitable Earth.





Essential - Facilities

Our 2030 Facility Upgrades

Our facilities provide us with the opportunity to make meaningful environmental improvements in unique and proactive ways.

Water: California's most precious resource is too good to waste. Our site improvements will conserve the water we use, recycle the water we don't, and increase the production water-retaining compost for California.

Organics: When plants and food decompose in landfills they produce greenhouse gases, when they are composted they sequester greenhouse gases. We are building our capacity to ensure that organics are recovered properly.

Energy: Our on-site biomass gasification/ anaerobic digestion facility will simultaneously address the excess of wood waste and the need for renewable energy. We are also planning to secure the entitlements to begin processing organic waste.

Resources: We are the last-chance stop for materials that could be recycled and restored. Our facility expansions serve to increase the amount of goods we can recover, and reduce the amount that is disposed.

Facilities
Goal

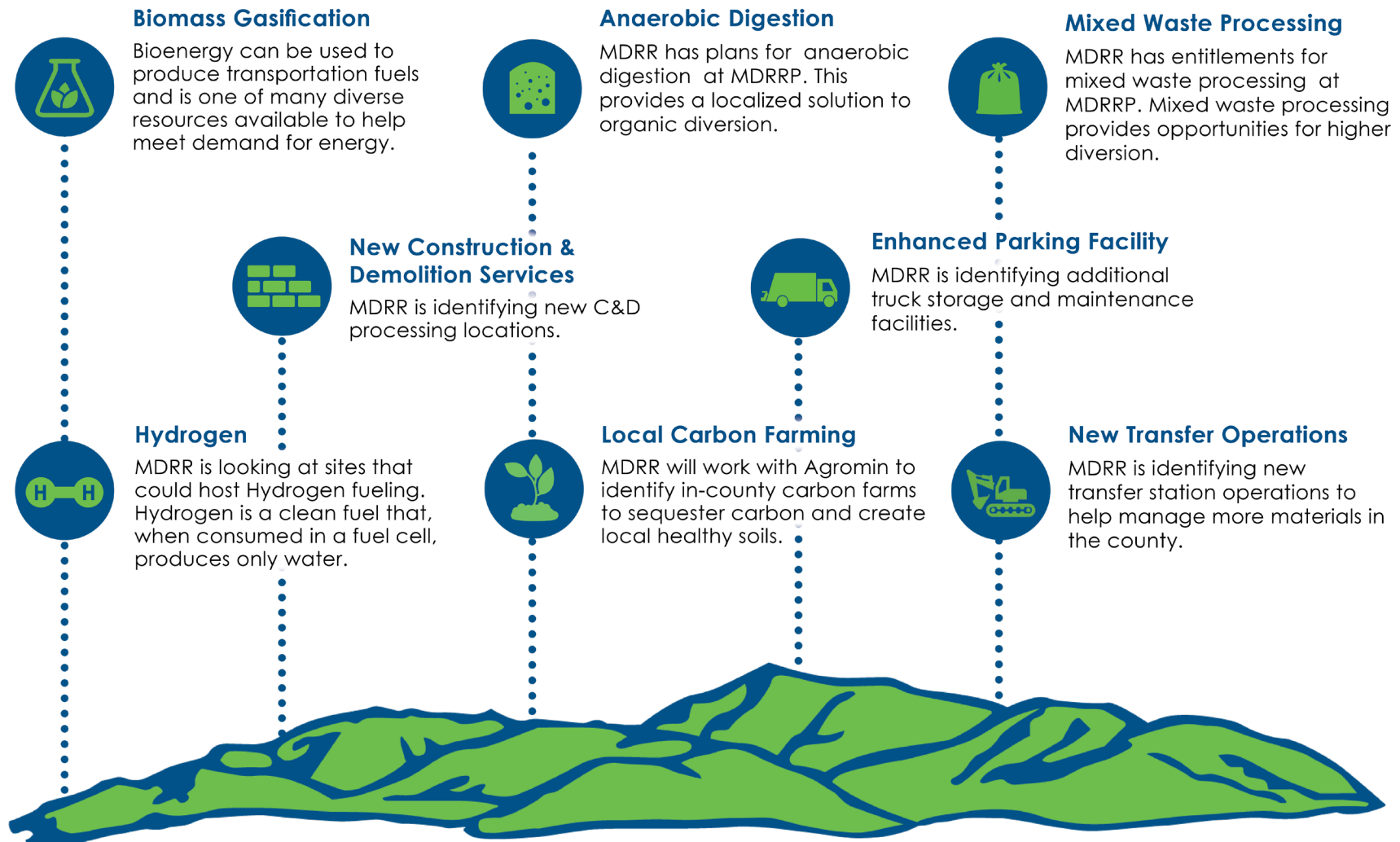




Essential

Future Enhancements

Our Vision of Future Enhancements



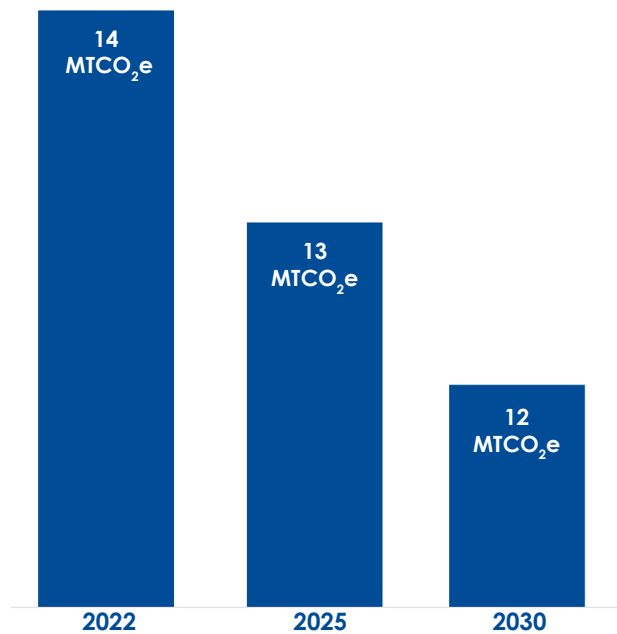


Essential - Transportation

Our Transportation Emission Goals

Climate change is an urgent issue that cannot be postponed until ideal technologies are developed. We are all witnessing its impacts today, and addressing this crisis necessitates immediate action along with the early adoption of emerging, improved technologies. We act now to move our existing fleet to cleaner renewable diesel fuel while simultaneously moving as fast as possible towards carbon neutral and carbon negative fuels.

Cleaner Fleets
kg/ Customer / Per Year



New Technologies that Utilize Biomass to Energy: Anaerobic Digestion, Hydrogen, and Gasification

Beyond our expansions and investments into MDRRP, we are looking for more opportunities to expand infrastructure to utilize alternative, renewable fuels for our fleet and for our facilities. These projects include partnerships with local companies like MCE Electric, anaerobic digestion, gasification, and hydrogen.



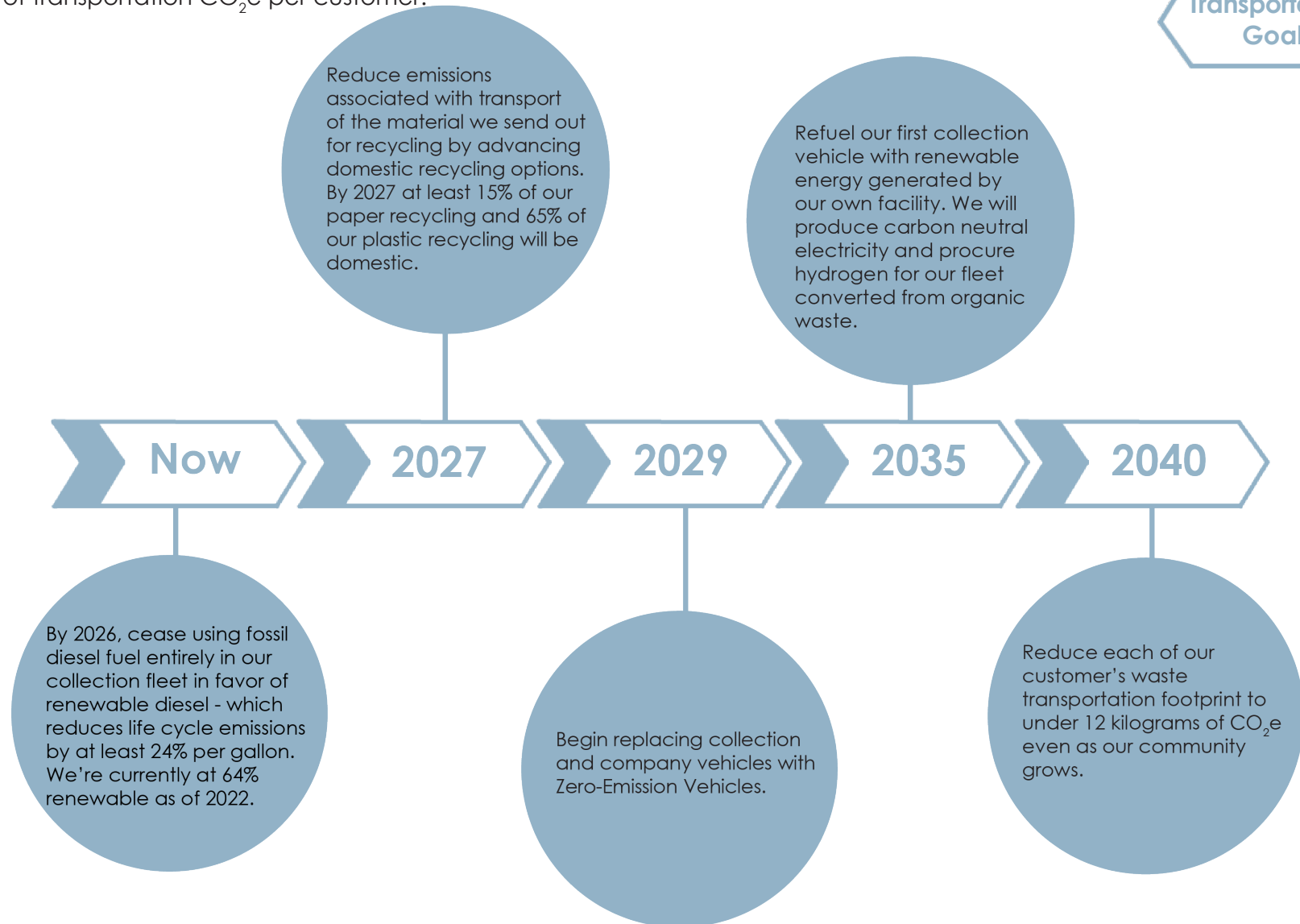


Essential - Transportation

Our Transportation Emission Goals

Below is our immediate and persistent plan to push the technologies and policies to our goal to less than 12 kilograms of transportation CO₂e per customer.

Transportation
Goal



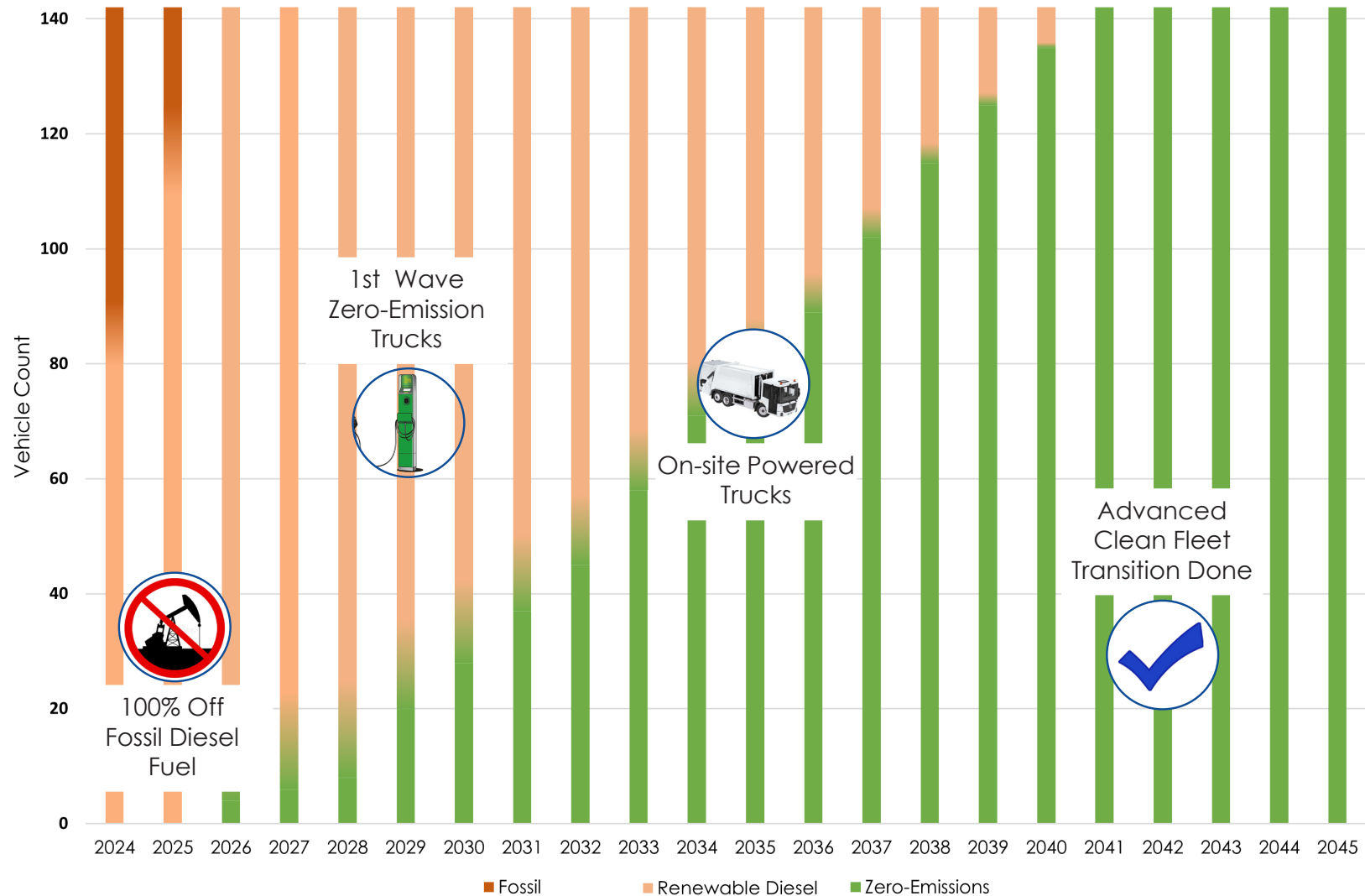


Essential - Transportation

Our Transportation Emissions Schedule

MDRR is acting immediately to eliminate fossil diesel from its fleet. After eliminating fossil fuels, we will eliminate emissions, ultimately we will transition to energy self-reliance as we produce carbon-negative fuel with the very waste we collect.

Sustainable Collection Fleet Transition Plan





Essential - Renewable Energy

Our Transition to Solar Energy



MDRR is dedicated to revolutionizing the way we harness energy through solar power. We are actively working on a micro-grid solar solution to generate and bank power with a goal of generating to meet and exceed the amount of energy our sites consume. This will directly assist in the City of Pittsburgh's goals for a sustainable energy source.

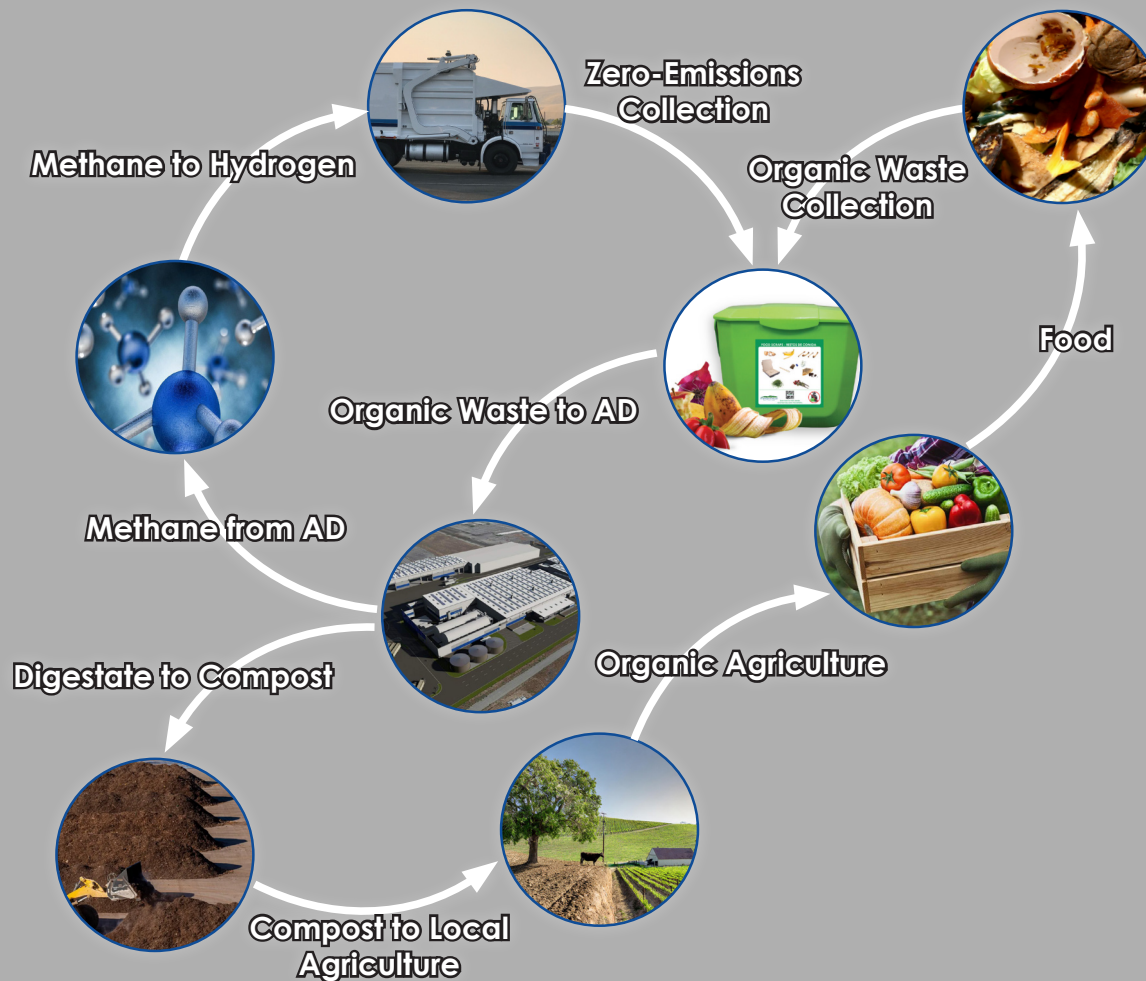
Related to this solar plan, we plan to implement carport solar panels and vehicle charging stations. These innovations will not only reduce the heat from our hardscapes but also generate the essential energy needed to fuel our fleet.



Fueling with Organics

Anaerobic Digestion

MDRR is planning for anaerobic digestion (AD) in its facility plan as an option for providing an outlet for food and plant waste. The proposed anaerobic digestion facility, slated for 2035 would add additional organics processing capacity, create compost feedstock, and provide renewable natural gas for powering our proposed zero-emissions fleet.



Rendering of AD Facility



Essential - Facilities

Anaerobic Digestion - Waste to Fuel Investments

Anaerobic Digestion Technologies

Fuel
Goal

MDRR has placed significant resources into planning for the future diversion needs of our communities, which include planning and achieving local land use permits, conducting necessary CEQA studies and review, and securing a 20-year Master Development Agreement for a biomass gasification facility, mixed waste processing operation, and an anaerobic digestion facility at the MDRRP. These visionary plans would ensure that technology solutions are in place in order to advance zero waste and circular economy goals of our community.

Energy produced from the biomass gasification plant and anaerobic digestion facility would further support our goal of reducing the carbon footprint of our collection and transfer operations that would be powered by renewable energy generated on-site – creating a sustainable closed-loop system!

Rendering of Mt. Diablo Resource Recovery Build Out





Essential - Facilities

Hydrogen - Waste to Fuel Investments

Partnerships with Alternative Fuels

MDRR is currently in the process of looking into utilizing hydrogen fuel to support our fleet and our facilities.

Waste-to-hydrogen facilities divert non-recyclable organic-rich waste from landfills and converting it into renewable, carbon negative hydrogen as an alternative, emission-free energy source.

Currently, MDRR partners with local companies to produce renewable, carbon negative hydrogen using their innovative waste processing system, diverting non-recyclable organic-rich waste from landfills and converting it into clean hydrogen as an alternative, emission-free energy source.

Hydrogen Technologies

Fuel
Goal



2035: Refuel our first collection vehicle with renewable energy generated by our own facility. We will produce carbon neutral electricity and hydrogen for our fleet converting organic waste.



Essential - Facilities

Biomass Gasification - Biomass to Energy Investments

Gasification Technologies

This is not just a project, it's a mission - a mission towards a greener, cleaner, and more sustainable Contra Costa County.

Gasification is a high temperature, low oxygen, thermochemical conversion process that the solid waste industry can use to convert biomass into heat and biochar. Syngas can be further converted into electricity. Gasification can produce biochar as a byproduct that, depending on the gasification environment and feedstock amounts, can be a valuable saleable product. Importantly, gasification provides an alternative to landfilling materials that can assist in the pursuit of renewable energy electricity and zero waste goals.



MDRR is permitted in developing a gasification facility that has the potential to utilize biomass feedstocks that will not only harness the power of biomass to create renewable energy but will also pave the way for a greener future. This facility is being discussed in conjunction with the construction of an electric charging station.

Additionally, there is a possibility that any excess power generated by the facility could be sold to the Grid or Marin Clean Energy (MCE) to offset on-site operations, further reducing our carbon footprint and supporting our commitment to environmentally conscious practices.

North Fork Facility being built



Fuel
Goal



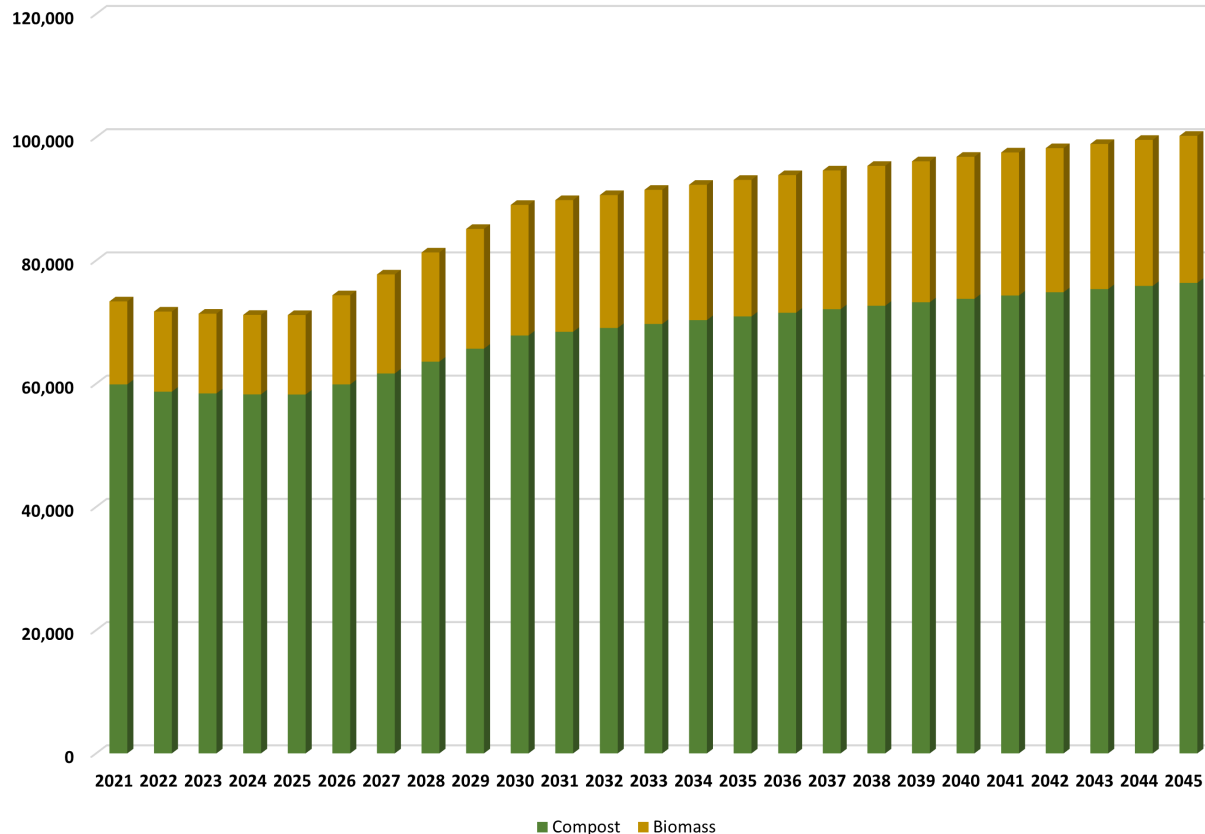
Essential - Facilities

Our 2030 Organics Facility Upgrades

Meeting California's Mandate

MDRR is stepping up the role it plays in realizing California's organic waste management ambitions. In addition to our outreach and collection efforts, we are investing in our campus to recover more and discard less organic waste to comply with SB 1383.

Organics Diversion Growth



Organics
Goal

Now:

MDRR is collecting and processing over 60,000 tons of green waste each year. Each ton diverted from a landfill avoids 0.3 MTCO₂e methane emissions, and becomes a valuable soil amendment instead.



Essential - Facilities

Water Savings Through Design: More Butterflies, Fewer Blowers



Our Mallard Drive offices have over 1,200 square feet of open air, sunlit, and publicly visible land teeming with potential. Our 2027 goal is to turn this unused turf into a water-saving haven for native plants and pollinators.



Pollinators



120,000 gallons of water each year



Native Plants



Quieter and Better Neighbors



500 kg of Reduced Lawn Equipment CO₂e/year



Lower Dust, Particulates, NO_x, and HC Emissions

MDRR conserves water through recycling as well. Our site is currently irrigated off of well water. Our site improvement plan will add a recycled water storage to re-utilize water for dust control and other non-potable purposes.



Essential - Facilities

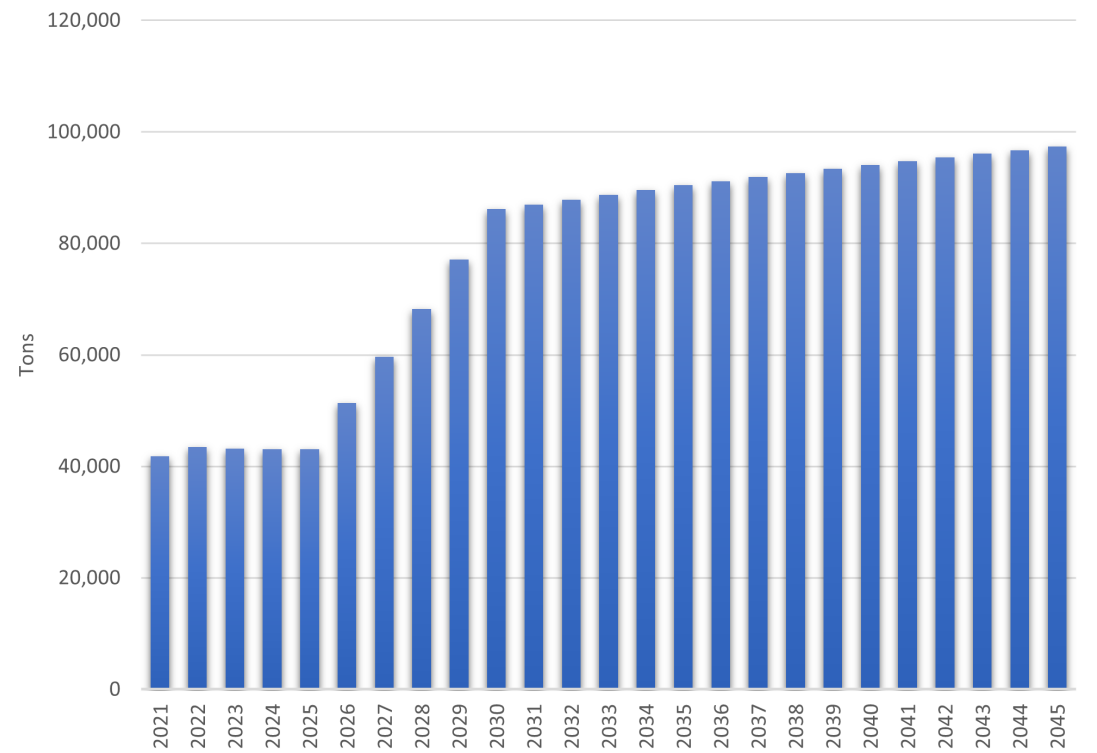
Conventional Recyclables

Conventional Recyclables

MDRR has been collecting recyclable materials for nearly a century, and we've been improving the entire time. We continue to grow our capability to recover our community's resources, even as the waste stream grows more complex. We sort metal, glass, paper, and plastic to give it new life. As we continue to increase the amount of conventionally recyclable materials we reclaim, we now also strive to improve how we recycle.

MDRR's growing role in this future is to facilitate the supply chain that brings materials from each of us as individuals to the producers. Our operations are versatile and diverse in achieving this vision. We are the means through which the discarded glass becomes another bottle, and we are also the means through which a bent length of rebar is returned to a producer who will forge it anew. There is a long way to go in realizing this economy, yet our link of the chain is strong, and we work to make the whole chain stronger.

Conventional Recycling



[Click Here for Full Policy Document](#)



Essential - Facilities

Extended Producer Responsibility (EPR)

Recyclable Materials Managed

MDRR is committed to identifying opportunities to expand recycling and diversion programs. Currently, the MDRRP diverts carpet, mattress, appliances, tires, and e-waste materials, in addition to processing commingled recyclables.

Senate Bill 54 Goals

**Cut By 25%**

Single-use plastic:
• Packaging and
• Food ware

**Recycle 65%**

Of single-use plastic:
• Packaging and
• Food ware

**Make 100%**

Of all packaging and
single-use plastic
food ware recyclable
or compostable.

MDRR understands that acceptable recyclable materials will change in accordance with SB 54 and SB 343, modifications to CalRecycle's Covered Materials Category list, and shifts in commodities markets. All recyclable materials processed at the MDRRP MRF will be marketed for recycling or reuse in such a manner that materials are actually diverted, with the exception of incidental contamination. All residual material from recyclables processing activities that are not marketed for use, will be accounted for as disposal tonnage.

As the EPR programs develop through regulatory rulemaking, MDRR will ensure we are fully compliant.

MDRR is currently in discussions to collaborate with a domestic textile recycler. The objective is to minimize waste by only discarding items that cannot be recovered in MDRR's ReUse Program. The textile recycler will serve as the final resort in the process, ensuring that as much of the textiles are repurposed as possible.



Will be located at the transfer station as a drop-off program, included in Reuse Days and potentially in Clean-up days.

**DECLUTTERING YOUR HOME
OR OFFLOADING MATERIAL
FROM A JOB SITE?**

Visit Our Facility Today!

OPEN 7 DAYS A WEEK:
BUSINESSES 5 AM - 6 PM | PUBLIC 7 AM - 6 PM

CONCRETE
FURNITURE
WOOD
ELECTRONICS
METAL
APPLIANCES
TIRES + MORE

Mt. Diablo Resource Recovery
Trusted + Proven + Essential

(925) 473-0180
1300 Loveridge Road, Pittsburg, CA 94565
mdrr.com/processing-facility



Essential

Recovering More

Recyclable Materials Managed

To plan ahead for SB 54, MDRR will enhance our Extended Producer Responsibility and reinforce our commitment to being a *Trusted + Proven + Essential* partner.

SB 54 Items to Spotlight:



Film Plastic



Multi-Layer Plastic



Polystyrene



Textiles



Cartons & Aseptic Packaging

MDRR has implemented a comprehensive strategy to reduce cartons sent to landfill. MDRR will collaborate with reprocessors recommended by the Carton Council to repurpose recovered cartons into artificial lumber. Additionally, MDRR will utilize advanced sorting technology to efficiently separate cartons.

Furthermore, MDRR will implement upstream measures to decrease the volume of cartons in the waste stream. This includes promoting source reduction. As a specific initiative, MDRR is proposing a grant program for schools that will purchase milk dispensers and reusable cups for cafeterias under the Recycle+ program. As SB 54 becomes more well defined through rule making, MDRR and its consultants will ensure that the MDRRP is poised to make operational changes as needed to support the increased recovery rates and management of covered materials. This could include investment into additional equipment, such as robotics or other AI optical sorters, separated collection at the point of generation, additional drop-off opportunities, or other programs and enhancements that will evolve alongside of this new regulation. As a preliminary step, MDRR is currently investigating the opportunity of robotics in its MRF to pilot new market opportunities for materials that will be covered under SB 54.





WHO WE ARE

TRUSTED

PROVEN

ESSENTIAL

Essential

Achieving California Certified Green Business Award, 2024





Essential

Environmental Policy

SWEEP - Gold Level Member

[The Solid Waste Environmental Excellence Performance \(SWEEP\)](#) Standard for Local Government and Materials Management Industry Standard is a comprehensive national voluntary sustainability standard for the solid waste industry. MDRR has the honor of being the first company to attain the prestigious status of SWEEP Gold Level Member, along with earning 'Industry Innovators' credits. MDRR has spearheaded initiatives, including setting ambitious waste reduction targets, stringent guidelines for company-wide Environmentally Preferable Purchases (EPPPs), waste prevention initiatives, upcycling programs, and made significant achievements in source reduction, reuse, and rescue efforts.

In 2023, MDRR was awarded Industry Innovators credits through our substantial source reduction policies. These policies encompass a range of initiatives, including partnerships with reputable food rescue groups like the Contra Costa and Solano Food Bank, as well as local reuse organizations such as East Bay Depot for Creative Reuse, St. Vincent DePaul, HOPE Solutions, Homeless Action Coalition, Uplift Family Services, and others. Furthermore, MDRR's source reduction policies feature a comprehensive C&D recycling ordinance that incentivizes deconstruction.

The SWEEP accreditation also encompasses a waste generation and prevention policy aimed at creating, facilitating, and endorsing waste reduction initiatives within MDRR's service regions. MDRR's waste generation policies comprise of implementing advanced disposal fees for single-use, disposable, and non-durable items, minimizing food waste, organizing government-sponsored book drives for community re-circulation, implementing extended producer and stewardship programs that tackle litter, single-use products, universal waste, and wasted goods (such as our Concord Residential Drop-Off Event and free programs like Motor Oil Recycling Kit and battery recycling drop-off).

MDRR's waste management policies encompass a range of initiatives aimed at minimizing waste generated. These strategies also include implementing a program to reduce transport packaging, implementing waste prevention measures at venues and events, establishing a program to reduce junk mail, introducing material leasing programs, implementing an employee recognition program, and fostering purchasing agreements to prioritize locally sourced food and other goods whenever possible.





Essential

Environmental Policy

Pursuing SWEEP - Platinum Level Member

To meet SWEEP Platinum level, MDRR is currently:

- Implementing a junk mail reduction program to remove customers from junk mail lists
- Consistently prioritizes reducing international export transportation distances
- Constructing LEED-Certified buildings, complete with a metal roof to reflect the summer sun
- Investing in on-site renewable energy generation infrastructure through Anaerobic digestion, biomass gasification, and/ or solar
- Installing renewable energy sources such as photovoltaic solar panels to produce electricity
- Installing efficient sinks and low-flow toilets to save water
- Installing energy-efficient light fixtures and appliances to use less electricity
- Continue updating and implementing our EPPP policies

Case Study - 2024 Installations



Low Flow Water, Toilets, and Sinks



LED Lights



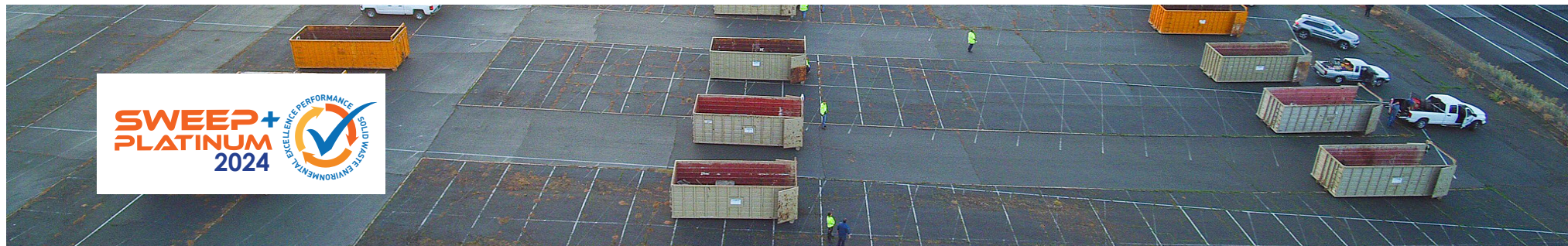
Lights on Timers



Idling Practices for Drivers



Tire Consumption Plan - Maintaining Tire Pressure





Essential

Construction & Demolition Environmental Policy

RCI C&D Certification

The Contra Costa Waste Services Material Recovery Facility's Construction and Demolition (C&D) line has received certification from the Recycling Certification Institute (RCI). Contra Costa Waste Services is responsible for accepting, sorting, and diverting C&D debris. The RCI certification was granted following a comprehensive assessment conducted by an external third-party auditor of the facility's procedures and guidelines. Additionally, it confirms the accuracy of the facility's recovery and recycling documentation. The Pittsburg facility is among sixteen C&D processing facilities in California that have achieved RCI certification.

"We are very pleased to have achieved this certification," said Gary Lazdowski, the COO of Contra Costa Waste Services.

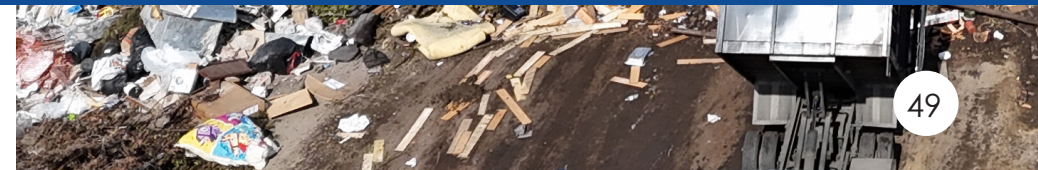
This certification is essential for the contractors responsible for transporting construction and demolition waste to the facility, as well as for environmental conservation efforts. It demonstrates our commitment to maximizing waste recovery."

Additionally, when a contractor is involved in a project aimed at obtaining LEED green-building certification (Leadership in Energy and Environmental Design), they can contribute to earning credits for the certification by responsibly disposing of C&D waste at a facility that is third-party certified.

The C&D Material Recovery Facility (MRF) operation is located at 1300 Loveridge Road in Pittsburg, CA. The MRF is currently owned and operated by Mt. Diablo Resource Recovery. Nothing Wasted Consulting Group performed the evaluation for RCI. The Nothing Wasted evaluation, and additional information on RCI and the Contra Costa Waste Services facility's performance, can be found on RCI's website.



See "Essential - C&D Diversion Rate Goals" for 2025 C&D Diversion Goals





Essential

C&D Diversion Rate Goals

Improving C&D Diversion Rates

The RCI uses independent third-party evaluators to verify the accuracy and reliability of the recovery/recycling rates reported. Providing a rigorous set of protocols, guidelines, and tools to professionally review and certify the recovery/recycling reports of participating C&D recyclers, the Institute is intended to increase certainty and build confidence in the C&D recycling marketplace on the part of project owners, architects, the environmental community, municipalities and the public.

The Pittsburg facility is among sixteen C&D processing facilities in California that have achieved RCI certification.



RECYCLING CERTIFICATION INSTITUTE

Contra Costa Waste Services (CCWS) accepts, sorts, and diverts Construction and Demolition (C&D) debris. The C&D materials are delivered, tipped, sorted, and processed for recovery. The C&D processing area consists primarily of compacted gravel base, with a concrete pad for tipping, loading, and operation of the sort-line equipment. The facility accepts Construction & Demolition debris (C&D) materials 7 days per week during normal operating hours, 7am to 6pm. Materials are delivered to the facility in debris box trucks, commercial vehicles, and self-haul public vehicles. Vehicles are weighed at the facility entrance, on a certified scale with record keeping exclusive to the C&D operations. CCWS has been accepting C&D debris since 2002. Alternative daily cover (ADC) means inert cover material other than earthen material placed on the surface of the active face of a municipal solid waste landfill at the end of each operating day to control vectors, fires, odors, blowing litter, and scavenging.

**2023 Recycling Rate with ADC is 91.22%
and the Recycling Rate without ADC is 15.97%.**

**2025 Recycling Rate Goal with ADC is 95%
and the Recycling Rate Goal without ADC is 20%.**

Facility Data for: **Dec 2023 - Nov 2024**



Materials	2023	2024										
	DEC	JAN	FEB	MAR	APR	MAY	JUN	JUL	AUG	SEP	OCT	NOV
Mixed C&D	4,557.07	4,320.94	4,644.04	5,590.02	6,121.26	5,961.70	6,780.49	6,411.21	7,237.67	6,492.77	6,875.27	5,439.45
TOTAL	4,557.07	4,320.94	4,644.04	5,590.02	6,121.26	5,961.70	6,780.49	6,411.21	7,237.67	6,492.77	6,875.27	5,439.45



Essential

Investment in Carbon Farming

Investment in Future Carbon Farming Initiatives

MDRR is dedicated to collaborating with the Contra Costa Resource Conservation District to support carbon farming initiatives that benefit local farmers and ranchers, thereby contributing positively to our communities. The Resource Conservation District works closely with farmers to address agricultural challenges through management practices that also sequester carbon dioxide, resulting in multiple advantages for both the farms and the community at large.

The application of compost offers numerous benefits, including enhanced soil fertility, improved plant health, and increased crop yields. It delivers stable, slow-release nutrients that are readily available to plants, enhances soil moisture retention and water infiltration, and decreases reliance on synthetic commercial soil conditioners and fertilizers. Additionally, compost can help moderate soil temperatures, reduce weed growth when used as mulch, and improve water quality by minimizing runoff and stabilizing nutrients. Furthermore, it fosters increased microbial activity and beneficial microorganisms while aiding in carbon storage and the reduction of greenhouse gas emissions.

The Contra Costa Resource Conservation District recommends applying 7-8 tons of lower-nitrogen compost per acre annually. ***In alignment with this, MDRR pledges to applying 7-8 tons per acre of organic compost on 60 acres of rangeland annually for farms in Contra Costa County as a pilot program.***



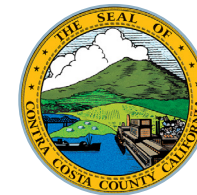


Sustainability Summary

How Our Goals Support Local Climate Action Plans



**Concord
Climate Action
Plan**



**Pittsburg &
Contra Costa
County
Climate Action Plan**

Given the Contra Costa County Interim Climate Action Work Plan, the Sustainable Concord & Climate Action and Resilience Plan, and the UN Sustainable Development Goals, our sectors will prioritize the following actions for future MDRR developments:

Addressing vehicle miles traveled, incorporating low-carbon building materials and strategies to ensure sustainable construction practices (including the use of renewable energy sources and carbon sequestration through carbon farming plans), implementing an edible food recovery inspection program, and expediting the conversion of our collection fleets. Additionally, MDRR is currently pursuing permits for a biomass gasifier and conducting research and investment into hydrogen technology.



Mt. Diablo Resource Recovery

Trusted+Proven+Essential



Front and back cover photos taken by Al Johnson, Save Mount Diablo; <https://savemountdiablo.org/>



Appendix A

Emissions Disclosure

MDRR's emissions assessment was developed consistent with The Climate Registry's (TCR) General Reporting Protocol (GRP) Version 3.0 for our fleet and facility emissions. As TCR's protocol includes only direct emissions for fleets, we have also incorporated the California Air Resource's Board (CARB) Low Carbon Fuel Standard (LCFS) to estimate and include upstream emissions for our fleet. We further utilize CARB's Advanced Clean Fleet guidance and LCFS to map our course towards lower per-customer fleet emissions.

MDRR's Emissions Assessment

Fleet Greenhouse Gas Emissions (MTCO ₂ e)		Facility Greenhouse Gas Emissions (MTCO ₂ e)	
2021	2022	2021	2022
13,551	13,498	453	572

Disposed Waste Greenhouse Gas Emissions (MTCO ₂ e) (WARM)		Diverted Organic Waste Avoided GHGs (MTCO ₂ e) (CARB)		Recovered Recyclables Avoided GHG (MTCO ₂ e) (WARM)	
2021	2022	2021	2022	2021	2022
26,458	26,735	-27,487	-26,888	-148,680	-149,48

Emissions	2021	2022
Operational Emissions (MTCO ₂ e)	14,004	14,420

MDRR Net-Zero GHG Analysis 2022			
Avoided GHG Emissions – Scope 3	-149,702 MTCO ₂ e	10.4 Times	
GHG Emissions – Scope 1 and 2	14,420 MTCO ₂ e		Net-Zero



Greenhouse Gas Projections based on Fleet Transition

	Total MTCO ₂ e								kg Per Capita
	Fossil Diesel	Renewable Diesel	CNG	RNG	Gasoline	Renewable Gasoline	Electric Vehicles	TOTAL:	
2021	4,854	9,685	724	0	344	0	0	15,607	13.45
2022	6,244	8,861	724	0	398	0	0	16,227	14.12
2023	3,497	10,944	720	0	396	0	0	15,557	13.60
2024	1,744	12,279	718	0	395	0	0	15,136	13.27
2025	0	13,638	574	27	395	0	0	14,634	12.83
2026	0	13,608	431	55	396	0	21	14,512	12.70
2027	0	13,632	289	83	397	0	32	14,432	12.59
2028	0	13,684	145	111	399	0	42	14,382	12.48
2029	0	13,455	0	140	403	0	324	14,322	12.32
2030	0	13,385	0	141	406	0	465	14,398	12.29
2031	0	13,291	0	142	409	0	632	14,475	12.24
2032	0	13,233	0	144	413	0	773	14,563	12.21
2033	0	13,031	0	145	417	0	1,040	14,633	12.15
2034	0	12,823	0	146	421	0	1,307	14,698	12.10
2035	0	12,714	0	148	424	0	1,494	14,779	12.06
2036	0	12,619	0	149	428	0	1,660	14,856	12.02
2037	0	12,402	0	150	431	0	1,927	14,911	11.97
2038	0	12,183	0	151	435	0	2,194	14,963	11.92
2039	0	12,001	0	152	438	0	2,445	15,037	11.89
2040	0	11,818	0	154	442	0	2,696	15,109	11.85
2041	0	11,720	0	155	445	0	2,872	15,192	11.83
2042	0	11,830	0	156	448	0	2,872	15,306	11.84
2043	0	11,936	0	157	451	0	2,872	15,415	11.84
2044	0	12,041	0	158	454	0	2,872	15,525	11.84
2045	0	12,144	0	159	457	0	2,872	15,632	11.85



Tons Recovered

Year	Aluminum Cans	Steel Cans	Copper Wire	Glass	HDPE	LDPE	PET	Corrugated Containers	Magazines/Third-class Mail	Newspaper	Office Paper	Phonebooks
2021	3,462	4,387	0	7,924	797	0	670	15,325	539	1,618	1,435	0
2022	3,654	4,635	0	10,022	1,179	67	1,082	20,994	679	2,036	1,870	0
2023	3,636	4,613	0	9,974	1,173	67	1,077	20,893	675	2,026	1,861	0
2024	3,626	4,600	0	9,947	1,170	67	1,074	20,836	674	2,021	1,856	0
2025	3,625	4,598	0	9,943	1,170	67	1,074	20,828	673	2,020	1,855	0
2026	3,664	6,122	0	10,098	1,346	859	977	22,124	968	1,767	1,961	0
2027	3,710	7,665	0	10,274	1,525	1,656	882	23,471	1,267	1,515	2,071	0
2028	3,764	9,238	0	10,473	1,709	2,464	788	24,879	1,570	1,265	2,187	0
2029	3,828	10,856	0	10,701	1,900	3,290	694	26,367	1,882	1,014	2,309	0
2030	3,895	12,503	0	10,934	2,095	4,130	599	27,886	2,200	760	2,434	0
2031	3,991	12,613	0	11,030	2,113	4,166	604	28,130	2,219	766	2,456	0
2032	4,091	12,728	0	11,131	2,133	4,204	610	28,387	2,239	773	2,478	0
2033	4,193	12,847	0	11,235	2,153	4,244	616	28,653	2,260	781	2,501	0
2034	4,295	12,962	0	11,336	2,172	4,282	621	28,910	2,280	788	2,524	0
2035	4,396	13,073	0	11,433	2,190	4,318	627	29,157	2,300	794	2,545	0
2036	4,433	13,182	0	11,528	2,209	4,354	632	29,401	2,319	801	2,567	0
2037	4,469	13,289	0	11,621	2,226	4,389	637	29,638	2,338	807	2,587	0
2038	4,504	13,393	0	11,713	2,244	4,424	642	29,871	2,356	814	2,608	0
2039	4,539	13,497	0	11,804	2,261	4,458	647	30,103	2,375	820	2,628	0
2040	4,573	13,600	0	11,893	2,279	4,492	652	30,331	2,393	826	2,648	0
2041	4,607	13,699	0	11,980	2,295	4,525	657	30,553	2,410	832	2,667	0
2042	4,640	13,797	0	12,066	2,312	4,557	661	30,772	2,427	838	2,686	0
2043	4,671	13,891	0	12,148	2,327	4,589	666	30,982	2,444	844	2,705	0
2044	4,703	13,985	0	12,231	2,343	4,620	670	31,192	2,460	850	2,723	0
2045	4,734	14,077	0	12,311	2,359	4,650	675	31,397	2,477	855	2,741	0



Tons Recovered

Year	Carpet	Personal Computers	Concrete	Tires	Asphalt Shingles	Drywall	Hazardous Waste	Yard Trimmings: Composted	Food Composted	Food - AD	Wood: Combustion	Bulky Item	Mattresses	Textiles	All Other
2021	625	41	4,090	73	0	0	817	59,888	0	0	13,470				
2022	641	40	3,879	77	0	1	1,064	58,710	0	0	13,002				
2023	638	40	3,860	77	0	1	1,059	58,427	0	0	12,940	0	0	0	0
2024	636	40	3,850	76	0	1	1,056	58,268	0	0	12,904	0	0	0	0
2025	636	40	3,848	76	0	1	1,056	58,245	0	0	12,899	0	0	0	0
2026	729	112	6,807	109	123	167	1,226	59,890	0	0	14,467	372	326	269	1,329
2027	824	184	9,795	142	248	335	1,398	61,663	0	0	16,071	747	654	540	2,668
2028	921	258	12,831	176	374	505	1,576	63,581	0	0	17,723	1,127	987	815	4,024
2029	1,022	333	15,940	211	503	678	1,760	65,681	0	0	19,442	1,515	1,326	1,095	5,410
2030	1,125	410	19,105	246	633	855	1,947	67,830	0	0	21,193	1,909	1,672	1,381	6,819
2031	1,135	413	19,272	248	639	862	1,964	68,424	0	0	21,379	1,926	1,686	1,393	6,879
2032	1,146	417	19,448	250	645	870	1,982	69,048	0	0	21,574	1,943	1,702	1,406	6,941
2033	1,156	421	19,630	253	651	878	2,000	69,696	0	0	21,776	1,962	1,718	1,419	7,007
2034	1,167	425	19,806	255	657	886	2,018	70,319	0	0	21,971	1,979	1,733	1,432	7,069
2035	1,177	428	19,975	257	662	894	2,036	70,922	0	0	22,159	1,996	1,748	1,444	7,130
2036	1,186	432	20,142	259	668	901	2,053	71,514	0	0	22,344	2,013	1,763	1,456	7,189
2037	1,196	435	20,304	261	673	908	2,069	72,090	0	0	22,524	2,029	1,777	1,468	7,247
2038	1,205	439	20,464	264	679	916	2,085	72,657	0	0	22,701	2,045	1,791	1,479	7,304
2039	1,215	442	20,623	266	684	923	2,102	73,222	0	0	22,878	2,061	1,805	1,491	7,361
2040	1,224	446	20,780	268	689	930	2,118	73,778	0	0	23,051	2,077	1,818	1,502	7,417
2041	1,233	449	20,932	270	694	936	2,133	74,317	0	0	23,220	2,092	1,832	1,513	7,471
2042	1,242	452	21,081	271	699	943	2,148	74,849	0	0	23,386	2,107	1,845	1,524	7,525
2043	1,250	455	21,225	273	704	950	2,163	75,360	0	0	23,546	2,121	1,857	1,534	7,576
2044	1,259	458	21,369	275	709	956	2,178	75,870	0	0	23,705	2,136	1,870	1,545	7,627
2045	1,267	461	21,510	277	713	962	2,192	76,370	0	0	23,861	2,150	1,882	1,555	7,678



Percent Recovered

Year	Aluminum Cans	Steel Cans	Copper Wire	Glass	HDPE	LDPE	PET	Corrugated Containers	Magazines/Third-class Mail	Newspaper	Office Paper	Phonebooks
2021	84%	33%	0%	60%	8%	0%	27%	62%	5%	49%	53%	
2022	84%	34%	0%	65%	11%	0%	37%	69%	6%	55%	59%	
2023	84%	34%	0%	65%	11%	0%	37%	69%	6%	55%	59%	
2024	84%	34%	0%	65%	11%	0%	37%	69%	6%	55%	59%	
2025	84%	34%	0%	65%	11%	0%	37%	69%	6%	55%	59%	0%
2026	85%	45%	0%	66%	13%	4%	33%	73%	9%	48%	62%	0%
2027	86%	56%	0%	67%	15%	8%	30%	77%	12%	41%	65%	0%
2028	86%	68%	0%	68%	17%	12%	27%	82%	15%	34%	68%	0%
2029	87%	79%	0%	69%	18%	16%	23%	86%	17%	27%	72%	0%
2030	88%	90%	0%	70%	20%	20%	20%	90%	20%	20%	75%	0%
2031	89%	90%	0%	70%	20%	20%	20%	90%	20%	20%	75%	0%
2032	91%	90%	0%	70%	20%	20%	20%	90%	20%	20%	75%	0%
2033	92%	90%	0%	70%	20%	20%	20%	90%	20%	20%	75%	0%
2034	94%	90%	0%	70%	20%	20%	20%	90%	20%	20%	75%	0%
2035	95%	90%	0%	70%	20%	20%	20%	90%	20%	20%	75%	0%
2036	95%	90%	0%	70%	20%	20%	20%	90%	20%	20%	75%	0%
2037	95%	90%	0%	70%	20%	20%	20%	90%	20%	20%	75%	0%
2038	95%	90%	0%	70%	20%	20%	20%	90%	20%	20%	75%	0%
2039	95%	90%	0%	70%	20%	20%	20%	90%	20%	20%	75%	0%
2040	95%	90%	0%	70%	20%	20%	20%	90%	20%	20%	75%	0%
2041	95%	90%	0%	70%	20%	20%	20%	90%	20%	20%	75%	0%
2042	95%	90%	0%	70%	20%	20%	20%	90%	20%	20%	75%	0%
2043	95%	90%	0%	70%	20%	20%	20%	90%	20%	20%	75%	0%
2044	95%	90%	0%	70%	20%	20%	20%	90%	20%	20%	75%	0%
2045	95%	90%	0%	70%	20%	20%	20%	90%	20%	20%	75%	0%



Percent Recovered

Year	Carpet	Personal Computers	Concrete	Tires	Asphalt Shingles	Drywall	Hazardous Waste	Yard Trimmings: Composted	Food Composted	Food - AD	Wood: Combustion	Bulky Item	Mattresses	Textiles	All Other
2021	17%	2%	20%	23%	0%	0%	9%	80%	0%		45%				
2022	17%	2%	19%	24%	0%	0%	11%	79%	0%		44%	0%	0%	0%	0%
2023	17%	2%	19%	24%	0%	0%	11%	79%	0%		44%	0%	0%	0%	0%
2024	17%	2%	19%	24%	0%	0%	11%	79%	0%		44%	0%	0%	0%	0%
2025	17%	2%	19%	24%	0%	0%	11%	79%	0%	0%	44%	0%	0%	0%	0%
2026	20%	6%	33%	34%	4%	4%	13%	82%	0%	0%	49%	4%	4%	4%	4%
2027	22%	9%	47%	44%	8%	8%	15%	84%	0%	0%	54%	8%	8%	8%	8%
2028	25%	13%	61%	55%	12%	12%	16%	86%	0%	0%	60%	12%	12%	12%	12%
2029	27%	16%	76%	65%	16%	16%	18%	88%	0%	0%	65%	16%	16%	16%	16%
2030	30%	20%	90%	75%	20%	20%	20%	90%	0%	0%	70%	20%	20%	20%	20%
2031	30%	20%	90%	75%	20%	20%	20%	90%	0%	0%	70%	20%	20%	20%	20%
2032	30%	20%	90%	75%	20%	20%	20%	90%	0%	0%	70%	20%	20%	20%	20%
2033	30%	20%	90%	75%	20%	20%	20%	90%	0%	0%	70%	20%	20%	20%	20%
2034	30%	20%	90%	75%	20%	20%	20%	90%	0%	0%	70%	20%	20%	20%	20%
2035	30%	20%	90%	75%	20%	20%	20%	90%	0%	0%	70%	20%	20%	20%	20%
2036	30%	20%	90%	75%	20%	20%	20%	90%	0%	0%	70%	20%	20%	20%	20%
2037	30%	20%	90%	75%	20%	20%	20%	90%	0%	0%	70%	20%	20%	20%	20%
2038	30%	20%	90%	75%	20%	20%	20%	90%	0%	0%	70%	20%	20%	20%	20%
2039	30%	20%	90%	75%	20%	20%	20%	90%	0%	0%	70%	20%	20%	20%	20%
2040	30%	20%	90%	75%	20%	20%	20%	90%	0%	0%	70%	20%	20%	20%	20%
2041	30%	20%	90%	75%	20%	20%	20%	90%	0%	0%	70%	20%	20%	20%	20%
2042	30%	20%	90%	75%	20%	20%	20%	90%	0%	0%	70%	20%	20%	20%	20%
2043	30%	20%	90%	75%	20%	20%	20%	90%	0%	0%	70%	20%	20%	20%	20%
2044	30%	20%	90%	75%	20%	20%	20%	90%	0%	0%	70%	20%	20%	20%	20%
2045	30%	20%	90%	75%	20%	20%	20%	90%	0%	0%	70%	20%	20%	20%	20%